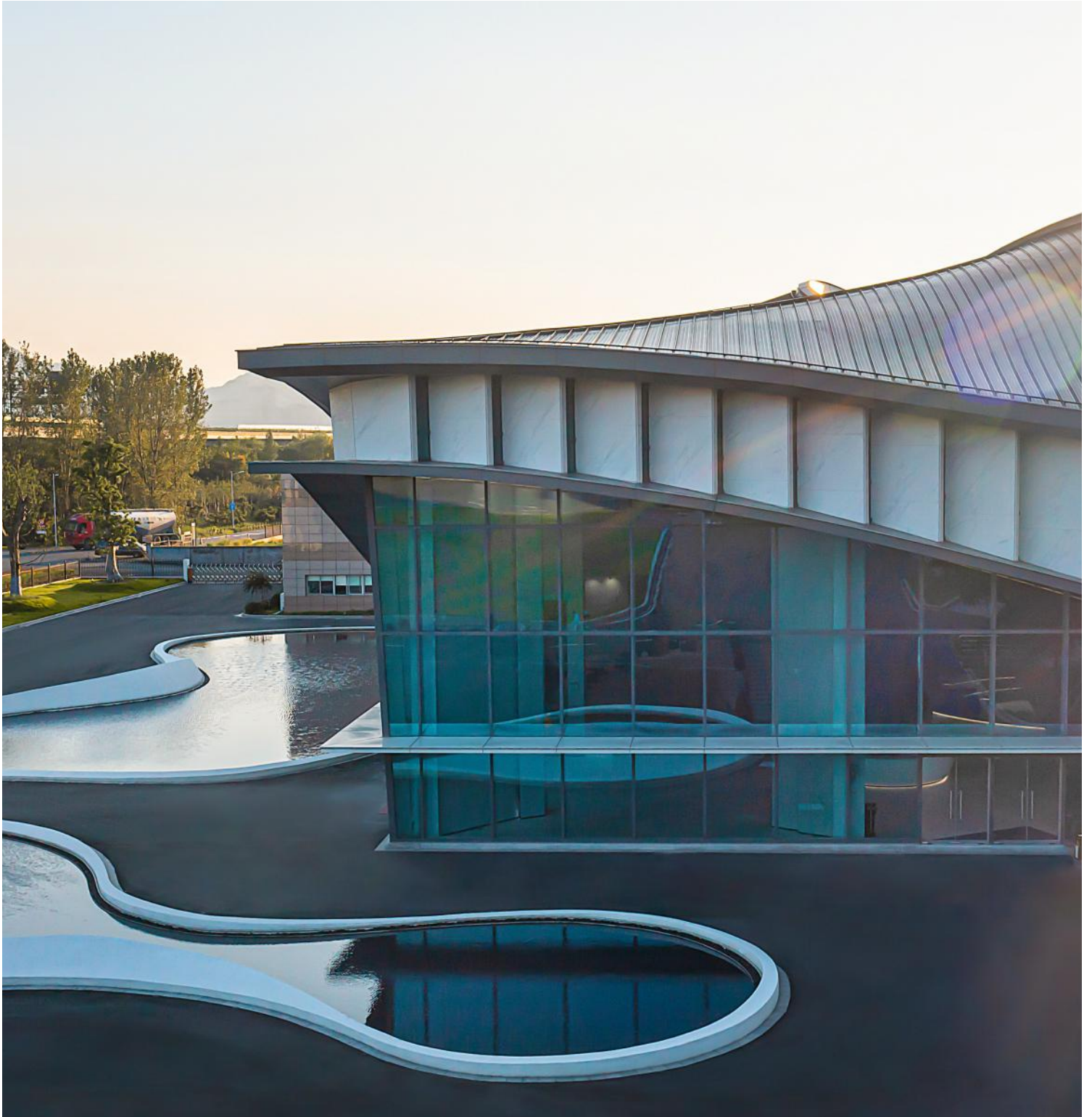


NABEL

FASHION  
DESIGN  
LIFE

# PROJECT CASES





## ABOUT US

1992-2025

Founded in 1992, NABEL is a renowned global leader in the specialized manufacture of Sintered Stone and Porcelain Tile. We have been dedicated to creating a healthy and high-quality life, focusing on pioneering premium, eco-friendly material. We provide unique, practical, and sustainable solutions for both indoor and outdoor spaces. While consistently adhering to technical innovation and superior products, NABEL explores the strength of nature and art to offer customers a space experiences beyond expectations, leading the industry with continuous innovation.

Currently, NABEL operates over 3,000 stores in more than 110 countries worldwide and nearly 10,000 partners, offering high-quality products and creating a wonderful life for our world together.

06 PUBLIC SPACE

72 RESIDENTIAL

110 HOTEL

120 SHOPPING MALL & OFFICE BUILDING

154 RETAIL



# PUBLIC SPACE



## China Zun

**Location :** Beijing-China

**Application :** Floors and Walls

China Zun is an iconic skyscraper located in Beijing, China, officially known as the China World Trade Center Phase III. It is one of the tallest buildings in China, standing at 528 meters with 108 floors. The design is inspired by the traditional Chinese wine vessel known as "zun," and its unique shape symbolizes the rich heritage of Chinese culture as well as the modern urban spirit.

The building houses office spaces, a hotel, a conference center, and an observation deck, offering visitors a panoramic view of Beijing. China Zun is not only a landmark of the city but also a symbol of China's economic development, representing the nation's prosperity and progress.



## Zhangjiang Science Center

Zhangjiang Science Center is located in Shanghai, China, and is a high-tech industrial park focused on technological innovation. The park leverages the Shanghai Zhangjiang Science Center, gathering numerous high-tech enterprises, research institutions, and innovation teams across various fields, including biomedicine, information technology, and electronic engineering.

Shanghai Zhangjiang Science Center is dedicated to promoting the transformation of scientific and technological achievements and industrial upgrading, offering comprehensive innovation services and support, including funding, technology, and market assistance. The park features a beautiful environment and well-developed infrastructure, providing an excellent ecological environment for business development.

**Location :** Shanghai-China

**Application :** Facades, Floors and Walls

# NABEL



## Beijing Daxing International Airport

**Location :** Beijing-China  
**Application :** Floors and Walls

Beijing Daxing International Airport is a modern international airport located between Daxing District and Langfang City in Beijing, China. Officially opened in 2019, it is one of the largest single-terminal airports in the world, designed to handle an annual passenger throughput of up to 100 million. The airport features a unique architectural design by renowned architect Zaha Hadid, resembling a blooming flower, with advanced facilities that provide efficient and convenient services.

Daxing Airport connects numerous domestic and international routes, serving as an important aviation hub for Beijing and the surrounding region, promoting regional economic development and international exchange.



## The Egypt New Capital Iconic Tower

**Location :** Cairo-Egypt  
**Application :** Floors

The Egypt New Capital Iconic Tower (also known as the "New Administrative Capital Tower") is an important landmark building located in the heart of Egypt's new capital. Standing at approximately 400 meters tall, it is one of the tallest buildings in Africa, symbolizing Egypt's modernization and future development. The design blends traditional and modern elements, with a structure made of glass and steel, showcasing unique architectural aesthetics.

The tower features observation decks, dining facilities, and business spaces, attracting the attention of numerous tourists and enterprises. It not only represents the new capital but also embodies Egypt's renewed image on the global stage.



## The African Union Comprehensive Service Center

The African Union Comprehensive Service Center is an important institution established by the African Union in Addis Ababa, Ethiopia, aimed at supporting cooperation and development among African countries. The center's architecture is modern, integrating elements of African culture, symbolizing the unity and progress of African nations. Facilities include meeting rooms, office spaces, and multifunctional halls designed to facilitate dialogue and collaboration in political, economic, and social spheres among African countries.

**Location :** Addis Ababa-Ethiopia

**Application :** Floors and Walls



The establishment of the Comprehensive Service Center signifies Africa's increasing influence in global affairs and provides vital support for achieving the continent's sustainable development goals.

NABEL



## The National Library of El Salvador

The El Salvador Library (Biblioteca de El Salvador), also known as El Salvador National Library, is a prominent cultural and educational institution located in San Salvador, the capital of El Salvador. This library serves as the country's national repository of books, manuscripts, and other educational resources, and it plays a vital role in the preservation of the nation's cultural heritage and the promotion of literacy and education.

**Location :** San Salvador-El Salvador  
**Application :** Floors and Walls



## Hangzhou International Conference Center

Hangzhou International Conference Center is located in the beautiful city of Hangzhou and serves as a comprehensive venue for meetings, exhibitions, cultural events, and business negotiations. The center boasts modern facilities and an elegant environment, aiming to provide high-quality services and support for various international conferences and events.

**Location :** Hangzhou-China  
**Application :** Floors and Walls



## Chengdu ICON Cloud

Chengdu ICON Cloud (European Center) is a comprehensive commercial project located in the core area of Chengdu, aimed at creating a modern business environment and multifunctional living space. The design of the project integrates international concepts, reflecting the vitality and innovation of a modern city.

**Location :** Chengdu-China  
**Application :** Floors and Walls

# PROJECT CASES



## Beijing Huairou International Exhibition Center

Location : Beijing-China  
Application : Floors and Walls

Beijing Huairou International Exhibition Center is located in Huairou District, Beijing, and serves as a modern, comprehensive facility for exhibitions and conferences. The center aims to provide high-quality venues and services for various international and domestic exhibitions, meetings, forums, and events.

It features multifunctional exhibition halls, meeting rooms, and supporting facilities, capable of accommodating different scales and types of activities. Its unique location and beautiful natural surroundings make the Huairou International Exhibition Center an ideal venue not only for business activities but also for cultural, artistic, and technological events. The center is committed to promoting regional economic development and facilitating exchanges and collaborations across various industries.

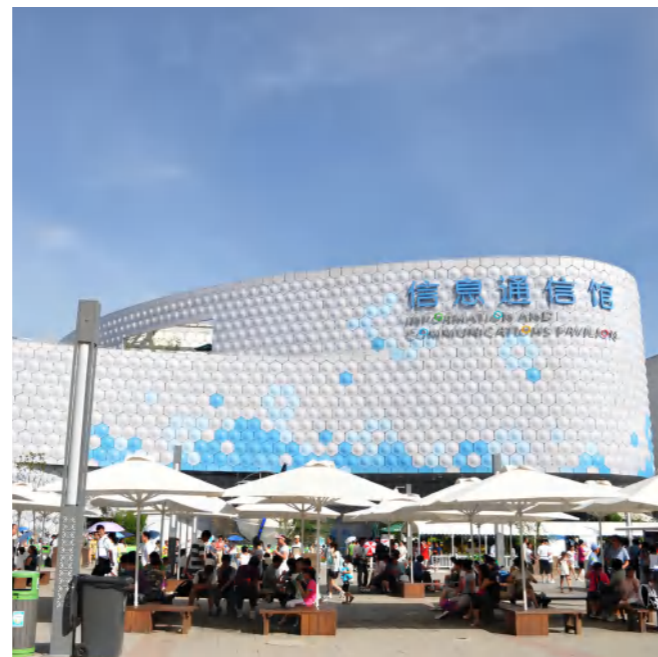


The Information and Communication Pavilion at the Shanghai World Expo 2010 is jointly built by China Mobile and China Telecom, with the theme of 'Information and Communication, Enjoying the City's Dream'. Located in Shanghai World Expo Puxi Enterprise Pavilion exhibition area, the main building is 20 metres high, with a total construction area of 6,196 square metres.

'The Information and Communication Pavilion fits the theme of 'Better City, Better Life' of the Shanghai World Expo, and with the help of information and communication technology, the pavilion will refresh the experience of city life dream, creating a picture of the future information city life without boundaries.

## The Information and Communication Pavilion

**Location :** Shanghai-China  
**Application :** Floors and Walls



## Beijing Olympic Basketball Centre

**Location :** Beijing-China  
**Application :** Floors and Walls

Beijing Olympic Basketball Centre, formerly known as Wukesong Gymnasium, was the venue for the basketball events of the 2008 Beijing Olympic Games. Located at the northeast corner of Wukesong Bridge on Beijing's West Fourth Ring Road, adjacent to Wukesong Station on Subway Line 1, it has a floor area of 63,000 square metres and is divided into the competition level (where the venue is located), the first level, the box level and the third level, with a capacity of 18,000 spectators.

# NABEL



## Hangzhou Olympic Sports Centre

**Location :** Hangzhou-China  
**Application :** Floors and Walls

Hangzhou Olympic Sports Centre is located in Hangzhou, Zhejiang Province, China, on the south bank of the Qiantang River, Qianjiang Century City block Hangzhou Olympic Sports Expo City core area, with the Qijia River as the boundary across the Binjiang District and Xiaoshan District; in April 2021 the whole put into use, for the 19th Asian Games in Hangzhou, the main venue.

The Hangzhou Olympic Sports Centre consists of the 'Big Lotus' stadium, the 'Butterfly' stadium/swimming pool, the 'Little Lotus' tennis centre, the 'Yutong' training hall, and the 'Yutong' training hall. 'The centre is capable of hosting world and intercontinental games.

In February 2021, the 'Big Lotus' was awarded the Luban Prize for China's construction projects (National Quality Project); in November, the 'Big Lotus' and 'Little Lotus' were assessed by a group of experts to be the first of their kind in the world. Modern Space Structure System Innovation, Key Technology and Engineering Application' researched and developed by Luo Yaozhi's team from Zhejiang University won the first prize of National Science and Technology Progress Award.

The National Stadium, also known as the 'Bird's Nest', is located in the southern part of the central area of the Beijing Olympic Park, and was the main stadium of the 2008 Beijing Olympic Games, where the Opening and Closing Ceremonies of the 2008 Summer Olympics and Paralympics, the finals of the track and field competitions and football matches were held, as well as the Opening and Closing Ceremonies of the 2022 Winter Olympics and Paralympic Winter Games.

The stadium covers an area of 204,000 square metres, with a building area of 258,000 square metres and a capacity of 91,000 spectators, of which 80,000 are official seats and 11,000 are temporary seats; it was designed by Jacques Herzog, de Meuron, Ai Weiwei and Li Xinggang, and constructed by the Beijing Urban Construction Group. The shape of the stadium is like a 'nest' and a cradle that nurtures life and holds the hope of mankind for the future. The designers did not make any unnecessary treatment for the stadium, leaving the structure exposed, thus naturally forming the appearance of the building.



## National Stadium

**Location :** Beijing-China  
**Application :** Floors and Walls

Togo Stadium (Stade de Kégué) is one of the main sports venues in Togo, located in the capital city of Lomé. It serves as the home ground for the Togolese national football team and hosts various domestic and international sports events.

Togo Stadium has a seating capacity for tens of thousands of spectators and is equipped with modern facilities suitable for a variety of sports, including football and athletics. Additionally, the stadium hosts cultural events and concerts, making it an important social and entertainment hub for local residents. As a landmark of Togo's sports sector, the stadium is dedicated to promoting the development of sports in the country and enhancing the health and well-being of the community.

## Togo Stadium

**Location :** Lomé-Togo

**Application :** Floors and Walls



## Ivory Coast Stadium

**Location :** Abidjan-Côte d'Ivoire

**Application :** Floors and Walls

Ivory Coast Stadium (Stade Félix Houphouët-Boigny) is the primary sports venue in Ivory Coast, located in Abidjan. It serves as the home ground for the national football team and hosts various domestic and international sporting events. The stadium is equipped with modern facilities suitable for football, athletics, and other sports activities.

Ivory Coast Stadium is not only the center for sports competitions but also hosts concerts and cultural events, providing an important social and entertainment space for local residents. As a significant symbol of Ivory Coast's sports sector, the stadium is dedicated to promoting sports development and enhancing the country's status on the international sports stage.

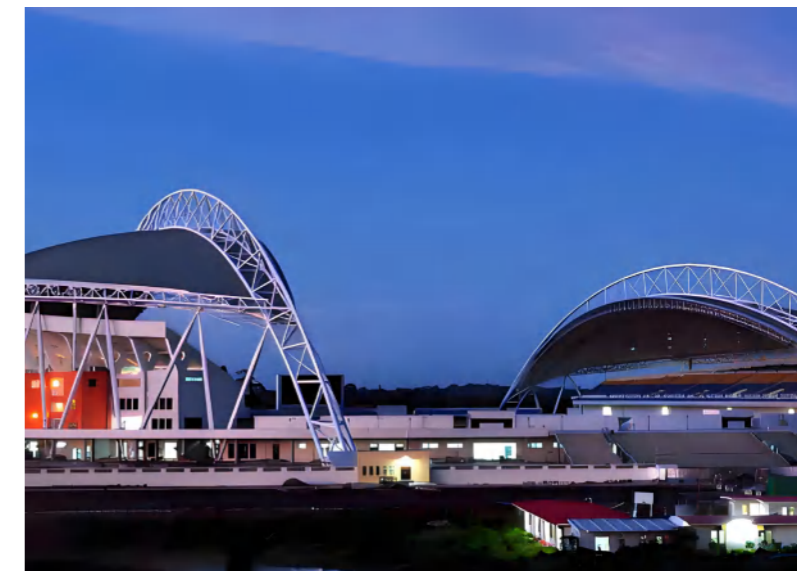
# PROJECT CASES



## Suzhou Olympic Sports Center

**Location :** Suzhou-China  
**Application :** Floors and Walls

Suzhou Olympic Sports Center is a large-scale comprehensive sports venue located in Suzhou, designed to host various international and domestic sports events as well as large-scale activities. The center features multifunctional facilities, including a sports stadium, swimming pool, gymnasium, and training grounds, catering to a wide range of sports such as football, basketball, swimming, and athletics. The design of the Suzhou Olympic Sports Center is modern, with advanced facilities that provide training and competition spaces for professional athletes while also offering fitness and leisure options for the public. The center is dedicated to promoting community sports development, regularly organizing sports events and training programs to encourage residents to engage in physical exercise and enhance their quality of life.



## Gabon Stadium

**Location :** Libreville-Gabonaise  
**Application :** Floors and Walls

Gabon Stadium (Stade de Franceville) is a modern sports venue located in Franceville, Gabon, serving as a key site for domestic football matches and international events.

The stadium can accommodate thousands of spectators and features advanced facilities and seating arrangements suitable for various sports activities, including football and athletics. In addition to sporting events, Gabon Stadium also hosts concerts and cultural activities, making it an important entertainment and social hub for the local community. As a vital component of Gabon's sports sector, the stadium is dedicated to promoting sports development and enhancing the country's influence on the international sports stage.

# PROJECT CASES



## Africa CDC

The Africa Centers for Disease Control and Prevention (Africa CDC) is a key institution established by the African Union to enhance cooperation and response capacity among African countries in the field of public health. Headquartered in Addis Ababa, Ethiopia, the center aims to improve the continent's ability to prevent, monitor, and respond to diseases.

The establishment of Africa CDC signifies the growing collaboration and autonomy of African nations in global health affairs, working towards sustainable development goals and improving the health of their populations.

**Location :** Addis Ababa-Ethiopia

**Application :** Floors and Walls



# PROJECT CASES



## The National Assembly Building

**Location :** Yaounde-Cameroon  
**Application :** Floors and Walls

The National Assembly Building of Cameroon is the seat of the legislative body of the Republic of Cameroon, located in the capital city of Yaoundé.

This building serves not only as the center for national political decision-making but also as a symbol of Cameroonian culture and history. The design of the National Assembly blends modern architectural styles with traditional Cameroonian elements, reflecting the country's diversity and unity.

Inside, the facilities include meeting rooms, office spaces, and public reception areas, providing support for various parliamentary activities. The surrounding environment is picturesque, creating a conducive atmosphere for political engagement and promoting the nation's democratic governance and social development.



## The Chinese Consulate General in Dubai

**Location :** Dubai-UAE  
**Application :** Floors and Walls

The Chinese Consulate General in Dubai is an important diplomatic institution of China in the UAE, responsible for handling diplomatic affairs, consular services, and the protection of citizens between the two countries. Located in the international city of Dubai, the consulate is dedicated to promoting friendly relations and cooperation between China and the UAE. The consulate provides various consular services, including visas, passports, and birth

registrations, assisting Chinese citizens and businesses in the UAE with relevant issues. The design of the consulate incorporates elements of Chinese culture, with a solemn yet modern appearance, aiming to provide a comfortable and safe environment for visitors. The Chinese Consulate General in Dubai serves not only as a platform for cultural exchange but also plays a significant role in promoting economic cooperation and people-to-people interactions.

# PROJECT CASES



## The Government Office Building of Tajikistan

The Government Office Building of Tajikistan is located in the capital city of Dushanbe and serves as the center for national administration and political activities. This building not only supports the daily operations of the government but also symbolizes Tajikistan's sovereignty and independence. The design of the office integrates modern architectural concepts with traditional Tajik cultural elements, reflecting the unique identity and values of the nation.

Inside, it features offices, meeting rooms, and reception areas to facilitate the efficient conduct of government affairs. The surrounding environment is beautiful, providing a comfortable and dignified working atmosphere for government officials and visitors, while promoting the country's governance and development.

**Location :** Dushanbe-Tajikistan

**Application :** Floors and Walls



## The Tajik Parliament Building

**Location :** Dushanbe-Tajikistan

**Application :** Floors and Walls

The Tajik Parliament Building is the seat of the legislative body of the Republic of Tajikistan, located in the capital city of Dushanbe. This building is not only the center of the country's political life but also an important symbol of Tajik culture and history. The design of the building blends modern architectural styles with traditional Tajik elements, reflecting the nation's unique identity and values.

Inside, the facilities include meeting halls, offices, and public spaces, all supporting the various functions of the parliament. The surrounding environment is picturesque, creating a dignified and vibrant political atmosphere that promotes the country's democratic development and governance efficiency.



## The National Emergency Operations Center of Peru

**Location :** Lima-Peru  
**Application :** Floors and Walls

The National Emergency Operations Center of Peru (Centro de Operaciones de Emergencia Nacional, COEN) is a critical facility dedicated to managing and coordinating disaster response and emergency operations throughout Peru. Located in Lima, the capital, COEN plays a vital role in ensuring efficient and timely responses to natural disasters, humanitarian crises, and other emergencies that may threaten public safety.

# NABEL



## The Parliament Building of Zimbabwe

The Parliament Building of Zimbabwe is the legislative headquarters of the Republic of Zimbabwe, located in the capital city of Harare. This building serves as the center of national political activities and is an important symbol of Zimbabwe's history and culture.

The design of the Parliament Building combines modern and traditional architectural styles, reflecting Zimbabwe's unique cultural identity and national spirit. The interior is well-equipped with facilities, including a conference hall, offices, and public spaces to support the various operations of Parliament.

The beautiful surroundings of the building create a solemn and vibrant political atmosphere, promoting the country's democratic development and governance efficiency. The existence of the Parliament Building signifies the nation's commitment to the rule of law and democratic institutions, serving as a vital cornerstone of national governance.

**Location :** Harare-Zimbabwe  
**Application :** Floors and Walls



## The Ethiopian Ministry of Transport Building

**Location :** Addis Ababa-Ethiopia

**Application :** Floors and Walls

The Ethiopian Ministry of Transport Building is an important institution for the country's transportation and infrastructure development, located in the capital city of Addis Ababa. This building serves as the center for formulating transportation policies and plans and symbolizes the nation's modern transportation system.

The design of the building blends modern architectural styles with traditional Ethiopian elements, reflecting the country's commitment to sustainable development. The interior facilities include conference rooms, offices, and technical support areas, providing support for the Ministry's various operations.

The establishment of the Ministry of Transport Building signifies Ethiopia's efforts to promote transportation infrastructure development and improve the quality of transportation services, aiming to facilitate the country's economic growth and social progress. By strengthening transportation networks, the Ministry plays a crucial role in enhancing the nation's connectivity and promoting regional cooperation.

## Lebanese National Higher Conservatory of Music

**Location :** Beirut-Lebanon

**Application :** Floors and Walls

The Lebanese National Higher Conservatory of Music, founded in 1930, is one of the most important music education institutions in Lebanon and the Middle East. Located in Beirut, the conservatory is dedicated to training musical talents and offers undergraduate and graduate-level programs in various music disciplines.

It provides specializations in music performance, composition, music education, music theory, and music research, supported by a highly qualified faculty. The Lebanese Conservatory not only focuses on developing students' professional skills but also actively promotes musical culture by regularly organizing concerts, lectures, and cultural events to foster artistic exchange and community involvement.



## The National Data Center of Bangladesh

**Location :** Dhaka-Bangladesh  
**Application :** Floors and Walls

The National Data Center of Bangladesh is one of the country's critical technological infrastructures, aimed at facilitating digital transformation and modernizing government services. Located in the capital city of Dhaka, the data center serves as the hub for national information technology development, supporting various digital services for government, businesses, and the public. The data center features a modern design and advanced technologies, providing efficient data storage and processing capabilities while ensuring the security and reliability of the data.

It is used not only for storing government data but also offers data hosting and cloud computing services to the private sector, promoting the growth of the digital economy.

The establishment of the National Data Center signifies significant progress in the field of information technology for the nation, facilitating the digitization and transparency of public services, and providing strong support for enhancing government efficiency and economic development.



# PROJECT CASES

## The Government Office Building of Ghana

**Location :** Accra-Ghana  
**Application :** Floors and Walls

The Government Office Building of Ghana serves as the administrative center of the Republic of Ghana, located in the capital city of Accra. This building is an important venue for national governance and policy-making, symbolizing the political power and administrative capabilities of Ghana. The design of the government office combines modern architectural styles with local cultural elements, reflecting Ghana's unique identity and values.

Inside, facilities include offices, meeting rooms, and public reception areas, providing support for the efficient operation of various government departments. The surrounding environment is elegant, offering a comfortable working atmosphere for government officials and visitors, while showcasing Ghana's natural beauty and historical heritage.



# PROJECT CASES



## Kinshasa Cultural Center

**Location :** Kinshasa-Congo  
**Application :** Floors and Walls

The Congo-Kinshasa Cultural Center, located in the capital city of Kinshasa, Democratic Republic of the Congo, is an important institution dedicated to promoting the country's cultural, artistic, and educational development. The center aims to showcase the rich cultural heritage of the Congo, including various art forms such as music, dance, painting, and handicrafts.

It regularly hosts exhibitions, performances, and cultural events, attracting participation from numerous artists, scholars, and visitors. Additionally, the Congo-Kinshasa Cultural Center offers educational and training programs to help the younger generation enhance their artistic literacy and creativity, fostering the transmission and innovation of culture.



## Tonga Integrated Office Building

**Location :** Nuku'alofa-Tonga  
**Application :** Floors and Walls

The Tonga Integrated Office Building is a modern architectural project located in the Kingdom of Tonga, designed to provide efficient office spaces for government agencies and commercial sectors. The building blends traditional Tongan cultural elements with modern design, focusing on sustainability and environmental friendliness.

Facilities within the integrated office building include meeting rooms, office areas, and communal spaces, aimed at fostering collaboration and communication among various departments while enhancing work efficiency.

Sichuan University, founded in 1896, is one of the oldest and largest comprehensive universities in China, located in Chengdu, Sichuan Province. The university has multiple colleges and research institutes covering various fields, including natural sciences, engineering, medicine, social sciences, and the arts.

Sichuan University is renowned for its strong faculty and research capabilities, particularly in engineering, medicine, management, and humanities and social sciences. The university emphasizes international development, having established partnerships with several overseas institutions to promote academic exchange and research collaboration, aiming to cultivate high-quality talents with a global perspective.

## Sichuan University

**Location :** Chengdu-China

**Application :** Floors and Walls



## Tsinghua University

**Location :** Beijing-China

**Application :** Floors and Walls

Tsinghua University, founded in 1911, is located in Beijing, China, and is one of the leading comprehensive research universities in the country. As a pioneer in engineering and technical education in China, Tsinghua University comprises multiple colleges covering various disciplines, including science, engineering, medicine, social sciences, humanities, and the arts.

The university is renowned for its rigorous academic standards and high-level research, having produced many distinguished alumni, including national leaders, scientists, entrepreneurs, and cultural figures. Tsinghua University emphasizes internationalization and has established extensive partnerships with many top universities around the world, actively promoting academic exchange and research collaboration, aiming to cultivate talents with innovative thinking and a global perspective.

## Student dormitories in Belarus

Student dormitories in Belarus are accommodation facilities provided for students attending various universities across the country. These dormitories typically come equipped with basic living amenities, including furniture, kitchens, and common areas, aiming to provide a safe and comfortable living environment for students. The conditions and costs of dormitories may vary depending on the university and region. Student dormitories not only offer convenient living arrangements but also serve as social hubs where students can establish friendships and networks during their studies. Many dormitories also organize activities to encourage interaction and integration into campus life.

**Location :** Minsk-Belarus

**Application :** Floors and Walls



Shanghai University of Finance and Economics (SUFE), founded in 1917, is one of the most influential institutions for finance and economics in China. Located in Shanghai, the university comprises multiple colleges covering disciplines such as economics, finance, management, law, and international relations.

SUFE is renowned for its rigorous academic environment and high-quality faculty, having trained a large number of outstanding finance and economics professionals who play significant roles across various sectors. The university emphasizes international development and has established partnerships with several overseas institutions, providing rich opportunities for exchange and learning, aiming to cultivate high-quality talents with a global perspective.

**Location :** Shanghai-China

**Application :** Floors and Walls

## Shanghai University of Finance and Economics





## Kabul University

**Location :** Kabul-Nepal

**Application :** Floors and Walls

Kabul University is one of the oldest higher education institutions in Afghanistan, founded in 1932 and located in the capital city of Kabul. As the main university in Afghanistan, Kabul University offers undergraduate and graduate programs across various disciplines, including literature, science, engineering, law, social sciences, and medicine.

The university is dedicated to cultivating talents necessary for the country's development and continues to promote education and academic research amidst a tumultuous historical context. Kabul University provides a multicultural learning environment for students, encouraging academic freedom and intellectual exchange to create a positive learning experience.



## Durbar High School

**Location :** Kathmandu-Nepal

**Application :** Floors and Walls

Durbar High School is one of the oldest and most prestigious educational institutions in Nepal. The school is known for its excellent academic performance and rich educational traditions, offering comprehensive education from primary to secondary levels.

Durbar High School emphasizes the overall development of students, focusing not only on academic achievements but also on sports, arts, and social activities to cultivate well-rounded individuals. With a dedicated faculty, the school is committed to providing a high-quality learning environment and resources to help students succeed in their future studies and lives.

# PROJECT CASES



## Afghanistan National Institute of Vocational Training

The Afghanistan National Institute of Vocational Training is a higher education institution in Afghanistan focused on vocational education and technical training. The institute aims to provide students with practical skills and knowledge to meet the demands of the country's economic development. It offers various programs in fields such as engineering, information technology, business management, and healthcare, combining theoretical education with practical training. The institute emphasizes the development of students' professional capabilities to enhance their employability and collaborates with local businesses and industries to facilitate the accumulation of practical experience. The Afghanistan National Institute of Vocational Training provides students with opportunities to achieve their career goals, contributing to the country's economic growth.

**Location :** Kabul-Afghanistan  
**Application :** Floors and Walls



## The University of Bamako

The University of Bamako (Université de Bamako) is the primary higher education institution in the Republic of Mali. The university comprises multiple faculties and research institutes covering various fields such as humanities and social sciences, natural sciences, engineering, law, and political science. The University of Bamako is dedicated to providing high-quality education and research, aiming to cultivate talents capable of addressing the development needs of the country and the region. The university also actively promotes international cooperation and exchange to enhance educational quality and academic research, offering students a wealth of learning opportunities.

**Location :** Bamako-Mall

**Application :** Floors and Walls





Suzhou North Railway Station is an important railway transportation hub located in Suzhou, Jiangsu Province, China. Officially opened in 2019, the station serves as a key node connecting the Beijing-Shanghai High-Speed Railway and other high-speed rail lines. The station features modern architectural design, with multiple platforms and waiting areas, providing a convenient travel experience for passengers. The surrounding area is well-connected with various transportation options and complete facilities, making it easy for travelers to reach downtown Suzhou and nearby regions. As a major transportation hub in Suzhou, the North Railway Station plays a significant role in promoting regional economic development and tourism.

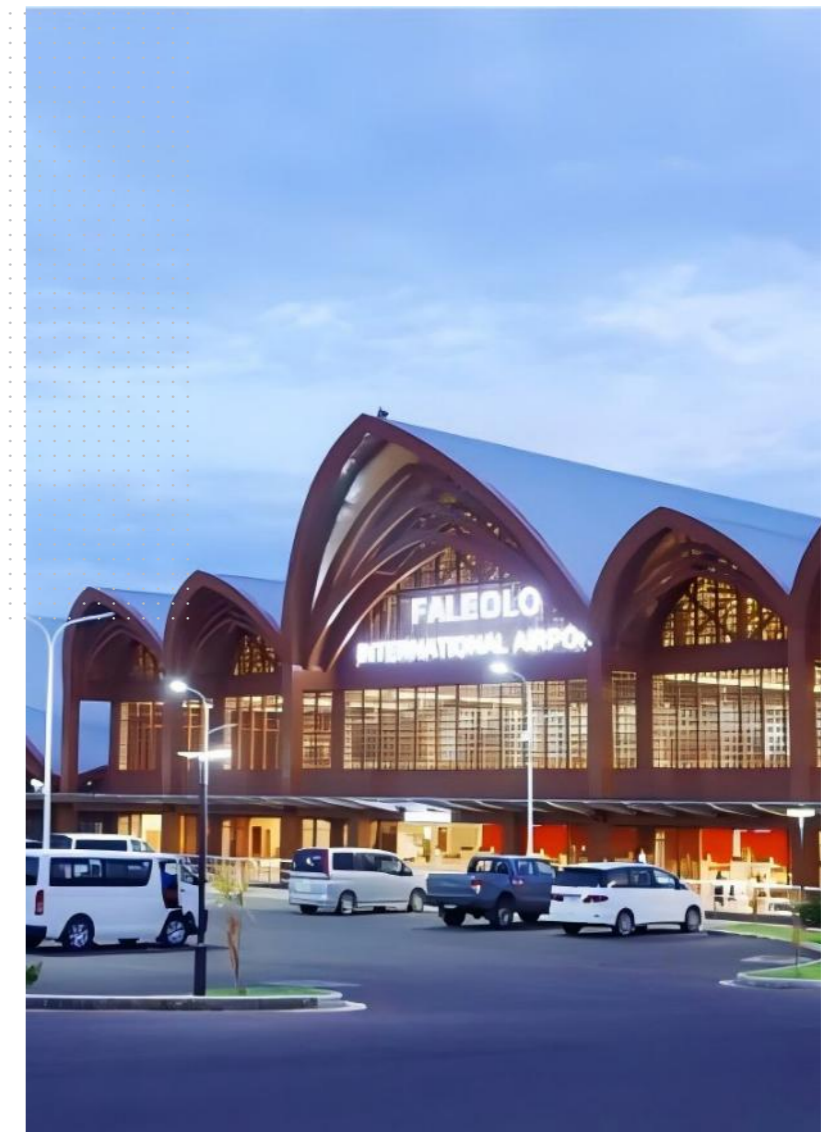
**Location :** Suzhou-China  
**Application :** Floors and Walls

## Suzhou North Railway Station

## Faleolo International Airport

Faleolo International Airport is the main international airport in Samoa, located on the island of Upolu, approximately 40 kilometers from the capital, Apia. The airport offers several international routes connecting the Pacific region and other global destinations. Faleolo International Airport features modern facilities, including a terminal, duty-free shops, and dining services, aiming to provide a comfortable travel experience for passengers. As Samoa's aviation hub, Faleolo International Airport plays a significant role in promoting tourism and economic development.

**Location :** Apia-China  
**Application :** Floors and Walls



## Chengdu Shuangliu International Airport

**Location :** Chengdu-China  
**Application :** Floors and Walls

Chengdu Shuangliu International Airport is a major international airport located in Shuangliu District, Chengdu, Sichuan Province, China. Officially opened in 1990, it has undergone several expansions and renovations, becoming one of the largest aviation hubs in Southwest China. The airport features two runways and multiple terminals, offering a wide range of domestic and international flight services. With modern facilities, the airport provides various amenities such as shopping, dining, and leisure options, aiming to deliver a comfortable travel experience for passengers. As a key transportation hub in Chengdu, Shuangliu International Airport plays a significant role in promoting regional economic development and tourism.



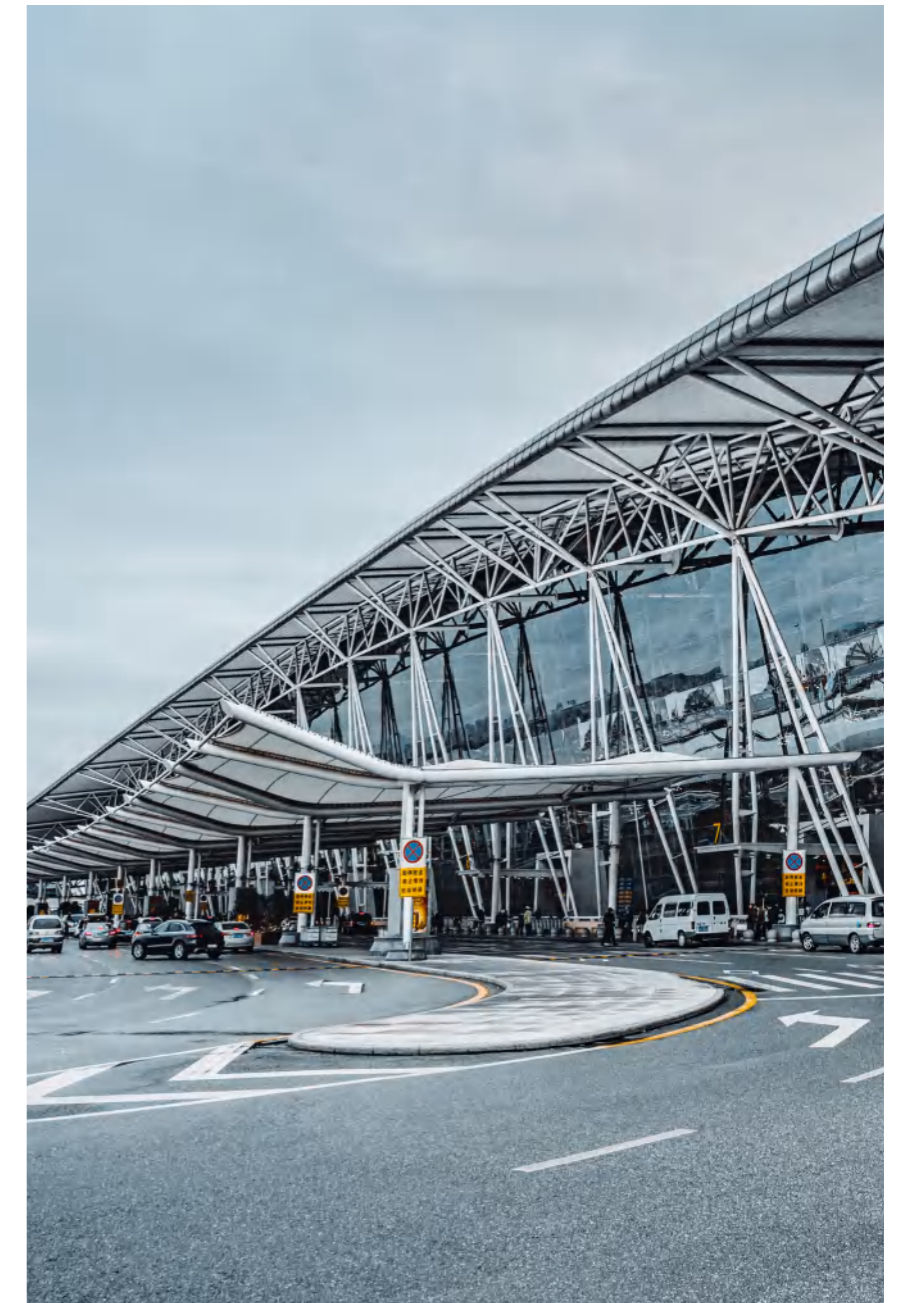
NABEL



## Guangzhou Baiyun International Airport

**Location :** Guangzhou-China  
**Application :** Floors and Walls

Guangzhou Baiyun International Airport is the main international airport in Guangzhou, Guangdong Province, China, located in Baiyun District. It is one of the largest aviation hubs in southern China. The airport features two terminals and offers a wide range of domestic and international flight services, connecting to numerous major cities around the world. Baiyun International Airport boasts advanced facilities, including shopping, dining, and leisure options, aiming to provide passengers with a high-quality travel experience. As a key transportation hub in Guangzhou, the airport plays a significant role in promoting regional economic development and international exchange.



# PROJECT CASES



## Velana International Airport

**Location :** Male-Maldives

**Application :** Floors and Walls

The main international airport in the Maldives is Velana International Airport, located on Hulhulé Island near the capital city, Malé. It serves as the primary aviation hub connecting the Maldives to the rest of the world. Velana International Airport offers numerous international routes, primarily catering to tourist flights heading to the Maldives, connecting various cities in Asia, Europe, and the Middle East.

The airport features modern facilities, including duty-free shops, dining, and leisure services, aiming to provide a comfortable travel experience for passengers. As the Maldives' main aviation gateway, Velana International Airport plays a significant role in promoting tourism and the country's economic development.



## Hangzhou Xiaoshan International Airport

Hangzhou Xiaoshan International Airport is the main international airport in Hangzhou, Zhejiang Province, China, located in Xiaoshan District. Officially opened in 1990, it has undergone several expansions and has become an important aviation hub in eastern China.

The airport features two terminals and offers a wide range of domestic and international flight services, connecting multiple cities both domestically and internationally. With modern facilities, Xiaoshan International Airport provides various amenities such as shopping, dining, and leisure options, aiming to deliver a comfortable travel experience for passengers. As a key transportation hub in Hangzhou, the airport plays a significant role in promoting regional economic development and tourism.

**Location :** Hangzhou-China

**Application :** Floors and Walls



### The Nepal Civil Service Hospital

**Location :** Kathmandu-Nepal  
**Application :** Floors and Walls

The Nepal Civil Service Hospital is a key medical facility in Nepal, primarily serving government employees and their families. Established to provide comprehensive healthcare services, the hospital plays a vital role in the country's public health system.

The hospital offers a wide range of medical services, including general medicine, surgery, pediatrics, gynecology, and specialized treatments. With a focus on quality care, the hospital is equipped with modern medical technology and staffed by qualified healthcare professionals. In addition to its clinical services, the Nepal Civil Service Hospital emphasizes preventive care and health education, aiming to improve overall health awareness among the civil service community. The hospital also engages in community outreach programs to extend its health services beyond its immediate patient base.

By providing accessible healthcare to government employees, the Nepal Civil Service Hospital contributes to the well-being of those who serve the nation and their families, ultimately supporting the country's workforce and public administration.

# PROJECT CASES



## Mahosot Hospital

Location : Vientiane-Laos  
 Application : Floors and Walls

Mahosot Hospital is an important healthcare facility located in Vientiane, the capital of the Lao People's Democratic Republic. The hospital aims to provide comprehensive medical services to the local population, including various departments such as internal medicine, surgery, obstetrics and gynecology, and pediatrics, with a focus on improving the overall health of the community. The hospital features modern facilities equipped with advanced medical equipment and technologies to meet the diverse needs of patients.

Additionally, Mahosot Hospital actively engages in health education initiatives to raise public awareness about health issues and promote disease prevention. As a part of Laos' healthcare system, Mahosot Hospital not only offers high-quality medical services but also plays a key role in training healthcare professionals, collaborating with various medical institutions to enhance the overall level of healthcare in the region.

## Bobo-Dioulasso Hospital

Bobo-Dioulasso Hospital is located in Burkina Faso's second-largest city, Bobo-Dioulasso, and serves as a key medical institution in the region. The hospital aims to provide comprehensive healthcare services to local residents, covering various fields including emergency care, surgery, internal medicine, obstetrics, gynecology, and pediatrics.

Bobo-Dioulasso Hospital plays a crucial role in enhancing local healthcare standards and improving the quality of life for residents.

**Location :** Bobo-Dioulasso-Burkina Faso

**Application :** Floors and Walls



# PROJECT CASES

## Cambodia-China Friendship Hospital

**Location :** Phnom Penh-Cambodia

**Application :** Floors and Walls

The Cambodia-China Friendship Hospital is an important medical institution established through cooperation between the Chinese and Cambodian governments. The hospital aims to provide high-quality healthcare services to the Cambodian people and promote friendship and cooperation between the two nations.





# PROJECT CASES

## The Medical Team Dormitory in Zanzibar

**Location :** Zanzibar  
**Application :** Floors and Walls

The Medical Team Dormitory in Zanzibar, Tanzania, is a facility established by the Chinese government to support healthcare services in the Zanzibar region of Tanzania. The dormitory is designed to provide a safe and comfortable living environment for medical teams sent to Zanzibar, allowing them to carry out their healthcare missions more effectively.

The dormitory is designed with both functionality and comfort in mind, featuring multiple units that include bedrooms, kitchens, and communal areas for activities. Medical team members can relax and unwind here, fostering team cohesion and collaboration. Basic living facilities are also provided to meet the daily needs of the team.

By offering good living conditions, the Medical Team Dormitory in Zanzibar not only enhances the work efficiency of medical personnel but also reflects the friendly cooperation and humanitarian spirit between China and Tanzania in the health sector. The support provided in the dormitory enables medical team members to focus on delivering high-quality healthcare services to local residents.

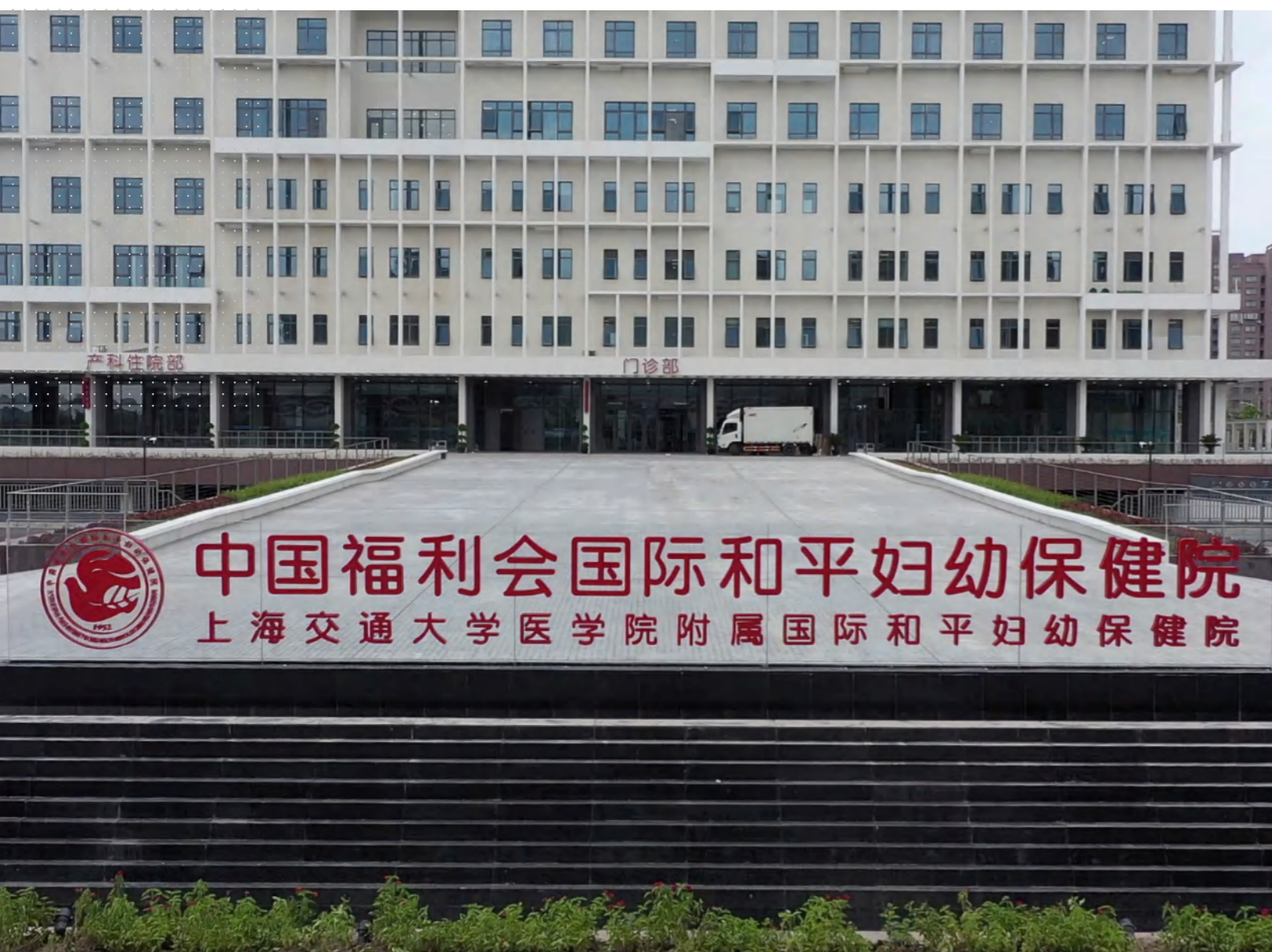


## The National Children's Hospital of Mongolia

**Location :** Ulaanbaatar-Mongolia  
**Application :** Floors and Walls

The National Children's Hospital of Mongolia, located in the capital city Ulaanbaatar, is a key institution dedicated to providing medical care specifically for children. The hospital's main goal is to improve children's health by offering comprehensive medical, preventive, and health care services.

# PROJECT CASES



## Shanghai Fengxian Nursery

**Location :** Shanghai-China  
**Application :** Floors and Walls

Shanghai Fengxian Nursery is an institution focused on the care and education of infants and young children, located in Fengxian District, Shanghai, China. The nursery aims to provide a safe, warm, and nurturing environment for children, supporting their healthy growth in the early stages of development. The nursery has a professional team of educators and caregivers dedicated to offering personalized care and educational services based on children's age characteristics and developmental needs.



The curriculum is designed to emphasize the cultivation of comprehensive qualities, including language, music, arts, and physical activities, promoting the overall development of children. In addition to daily care and education, Fengxian Nursery actively organizes parent-child activities and community exchanges, enhancing the interaction and cooperation between families and the nursery, and jointly focusing on the growth and development of children.

# PROJECT CASES

The Guinea Friendship Hospital is an important healthcare institution in Guinea, aimed at providing high-quality medical services to the local population. The hospital's establishment has received support from friendly nations, reflecting the international community's concern for Guinea's public health initiatives.

The hospital features various medical departments, offering comprehensive healthcare services, including emergency care, internal medicine, surgery, obstetrics and gynecology, and pediatrics.

In addition to treating illnesses, the Guinea Friendship Hospital emphasizes prevention and health education, actively engaging in community health promotion activities to raise public awareness about health issues.

The hospital's goal is to improve healthcare conditions in Guinea, enhance the quality of medical services, and contribute to the development of the country's health sector. Through collaboration with international medical institutions, the Guinea Friendship Hospital also promotes medical research and technological exchange to continuously improve the quality and efficiency of its healthcare services.

## The Guinea Friendship Hospital



## Tboung Khmum Provincial Hospital

**Location :** Tboung Khmum-Cambodia

**Application :** Floors and Walls

The Tboung Khmum Provincial Hospital is an important medical institution in Cambodia, located in Tboung Khmum Province, dedicated to providing high-quality healthcare services to local residents. The hospital's establishment and operations aim to enhance the region's healthcare standards and improve the health of the community.

Equipped with modern medical facilities, the hospital offers a range of services, including emergency care, internal medicine, surgery, obstetrics, gynecology, and pediatrics. The medical team consists of experienced doctors and nurses who provide professional diagnosis and treatment to patients.

In addition to routine medical services, Tboung Khmum Provincial Hospital emphasizes public health education and health promotion, conducting various health awareness campaigns to raise community health consciousness and promote overall well-being.

The Tboung Khmum Provincial Hospital serves not only as a vital medical resource for local residents but also as a key component of Cambodia's healthcare system, driving medical development and social progress in the region.

# NABEL

# PROJECT CASES



## The Second People's Hospital Affiliated to Sichuan University

**Location :** Chengdu-China  
**Application :** Floors and Walls

The Second People's Hospital Affiliated to Sichuan University is located in Chengdu, Sichuan Province, China. It is a comprehensive hospital integrating medical care, teaching, and research. Affiliated with Sichuan University, the hospital has a strong academic background and medical resources, dedicated to providing high-quality medical services to patients.

The hospital offers a variety of departments, including internal medicine, surgery, obstetrics and gynecology, pediatrics, and neurology, covering a wide range of medical fields from basic healthcare to specialized treatment.

It is equipped with modern medical facilities and advanced diagnostic and treatment equipment to meet the diverse healthcare needs of patients. As a teaching hospital, the Second People's Hospital plays a key role in training medical students and residents, actively participating in medical education and research activities, promoting advancements in the medical field.

The hospital emphasizes patient experience, providing personalized medical services and striving to create a safe and comfortable environment for every patient.



## Wuxi Traditional Chinese Medicine Hospital

**Location :** Wuxi-China  
**Application :** Floors and Walls

Wuxi Traditional Chinese Medicine Hospital is a comprehensive TCM hospital located in Wuxi City, Jiangsu Province, China. The hospital is dedicated to the research, education, and clinical practice of traditional Chinese medicine, providing a combination of TCM and Western medicine services to meet the diverse needs of patients.

The hospital has multiple departments, including internal medicine, surgery, gynecology, pediatrics, acupuncture and massage, and rehabilitation, covering various aspects of TCM treatment. With an experienced medical team and modern medical equipment, Wuxi Traditional Chinese Medicine Hospital offers efficient and safe medical services to its patients.

As a promoter of TCM culture, Wuxi Traditional Chinese Medicine Hospital actively conducts public education and outreach activities, regularly organizing health lectures and free clinics to enhance public awareness and understanding of TCM.

The hospital emphasizes patient experience and advocates for personalized service, creating a comfortable environment for patients. Wuxi Traditional Chinese Medicine Hospital is committed to becoming a benchmark for TCM healthcare in the region and contributing to the development of TCM.



## CORE Residence @ TRX

Core Residence at TRX is a premium residential development located in the heart of Kuala Lumpur, Malaysia. The project is situated within the prestigious Tun Razak Exchange (TRX), Malaysia's upcoming international financial district. Core Residence is designed to offer exceptional living experiences for urban elites, combining outstanding design, top-tier amenities, and unparalleled connectivity.

**Location :** Kuala Lumpur-Malaysia  
**Application :** Floors and Walls

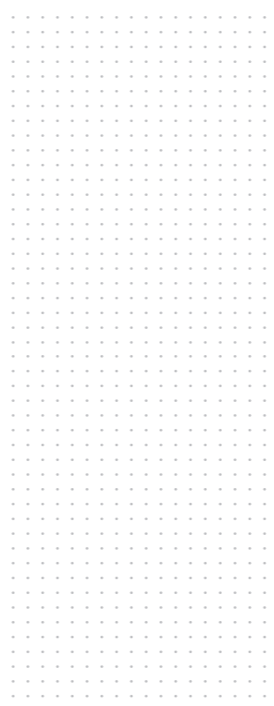




NABEL

### Luxury Villa Venezueka

Location : Caracas-Venezuela  
Application : Countertop, Floors and Walls



# PROJECT CASES



## OASIS

Location : Sydney-Australia

Application : Countertop



# PROJECT CASES



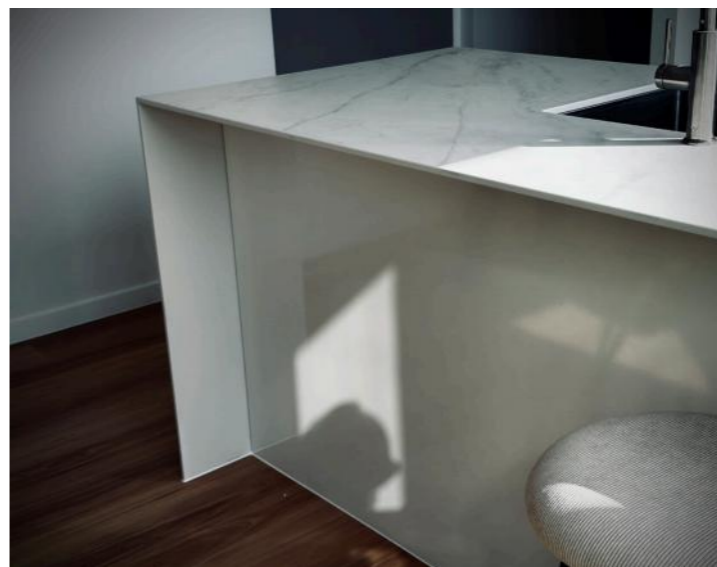
**New Market**



**Location : Sydney-Australia**  
**Application : Countertop**

# PROJECT CASES

---



## Malo

Location : Australia  
Application : Countertop

# PROJECT CASES



**Luxury Apartment**

**Location : Sydney-Australia**  
**Application : Countertop**

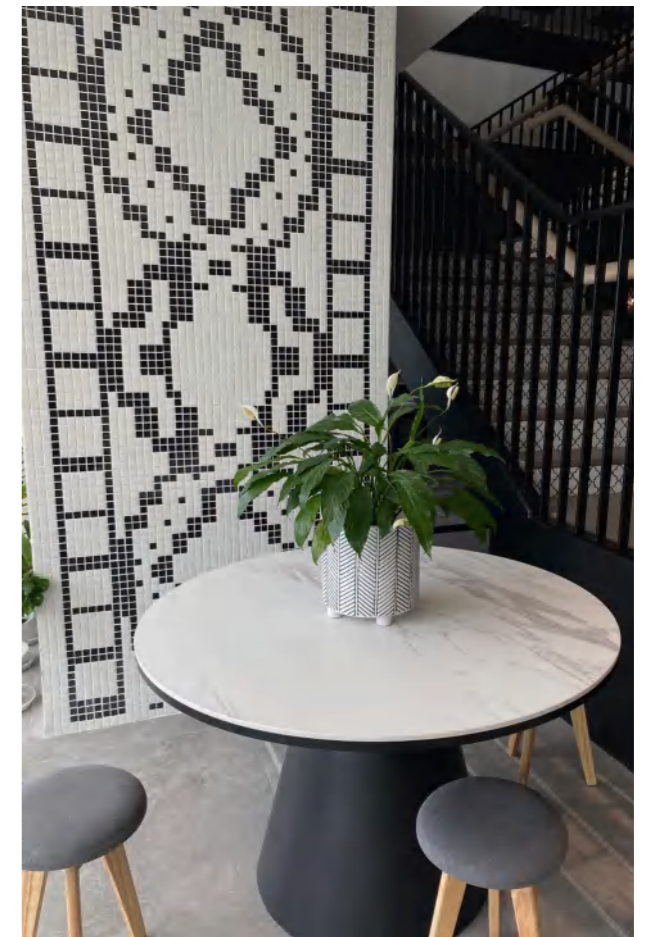


NABEL

# PROJECT CASES

## BPO office

Location : Manila-Philippines  
Application : Countertop Table



# PROJECT CASES



## Hangzhou Asian Games Village

**Location :** Hangzhou-China  
**Application :** Floors and Walls

**H**angzhou Asian Games Village was built for the 2022 Hangzhou Asian Games, aiming to provide convenient accommodation and services for athletes and accompanying personnel. The village blends modern architectural design with local cultural features, offering various types of lodging, dining options, and recreational areas. Equipped with training facilities and supporting amenities, the village ensures comfort and convenience for athletes during the competition. Beyond being the hub for the events, the Asian Games Village serves as an important showcase of Hangzhou's urban landscape and culture.



INABEL



## Beijing Kunyu Mansion

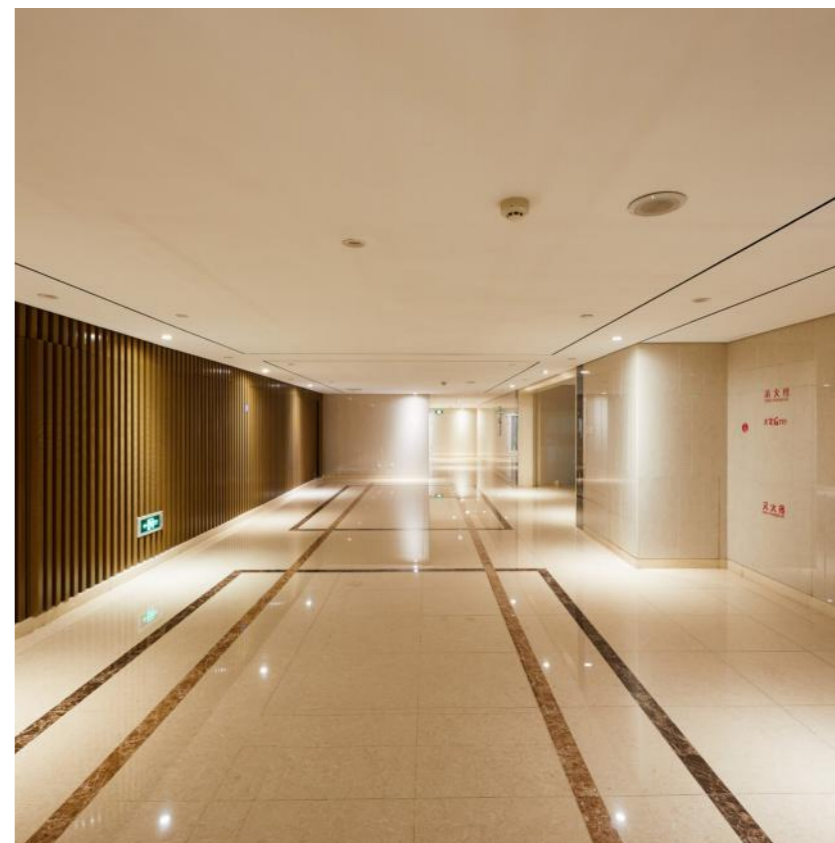
Location : Beijing-China

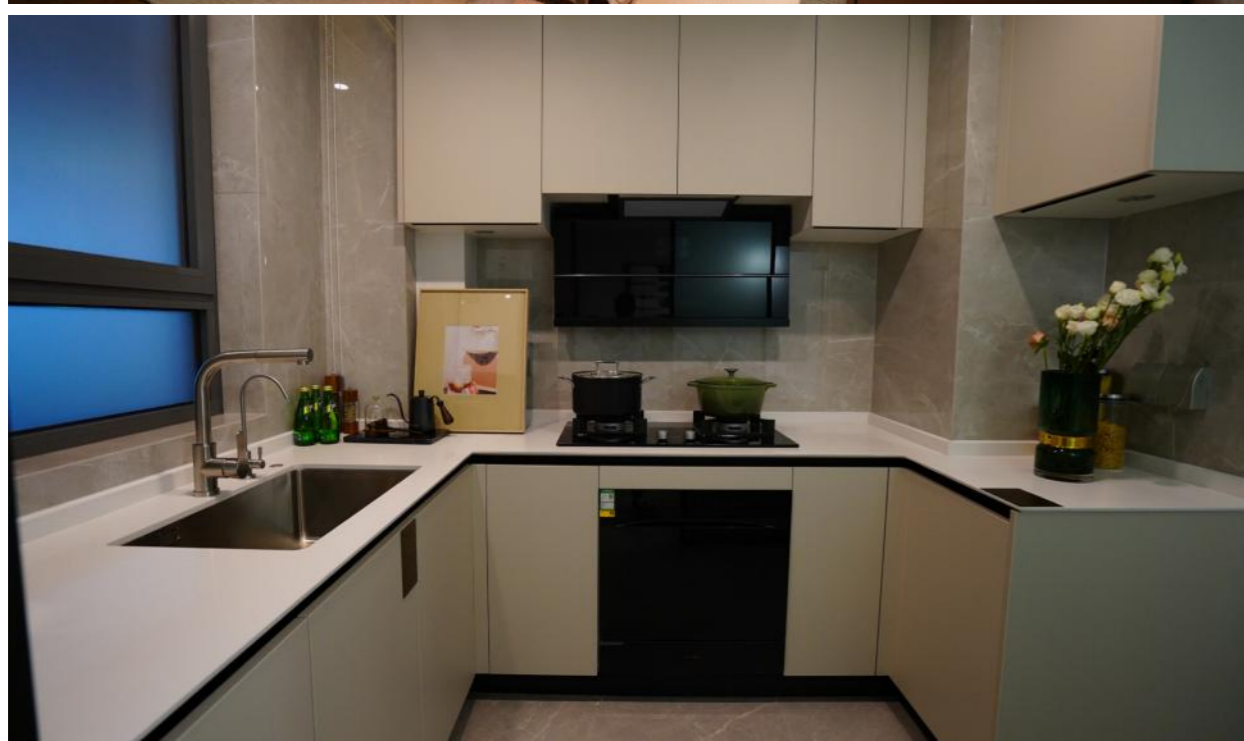
Application : Floors and Walls

Beijing Kunyu Mansion is a high-end luxury residential project located in the central area of Beijing. Known for its elegant architectural design and high-quality living facilities, the project aims to provide residents with a comfortable and convenient living environment.

The surrounding area is well-equipped with amenities, offering easy access to various commercial centers, cultural sites, and educational institutions. The project includes recreational facilities such as a gym, swimming pool, and gardens, catering to the diverse needs of residents. As a representative of premium housing, Kunyu Mansion attracts many homebuyers seeking a high-quality lifestyle.

## PROJECT CASES





## Nanjing Youth Olympic Village

Nanjing Youth Olympic Village was purpose-built for the 2014 Nanjing Youth Olympic Games as an international community, designed to offer high-quality living and training facilities for young athletes from around the world. Located in Nanjing's Hexi New Town, the village combines modern architectural aesthetics with eco-friendly concepts, providing well-equipped lodging, dining, medical, and recreational amenities to create a healthy and comfortable community atmosphere. Following the games, the village was repurposed into a residential area and an educational training base, leaving a unique Olympic legacy and adding international vibrancy to Nanjing.

**Location :** Nanjing-China  
**Application :** Floors and Walls



# PROJECT CASES

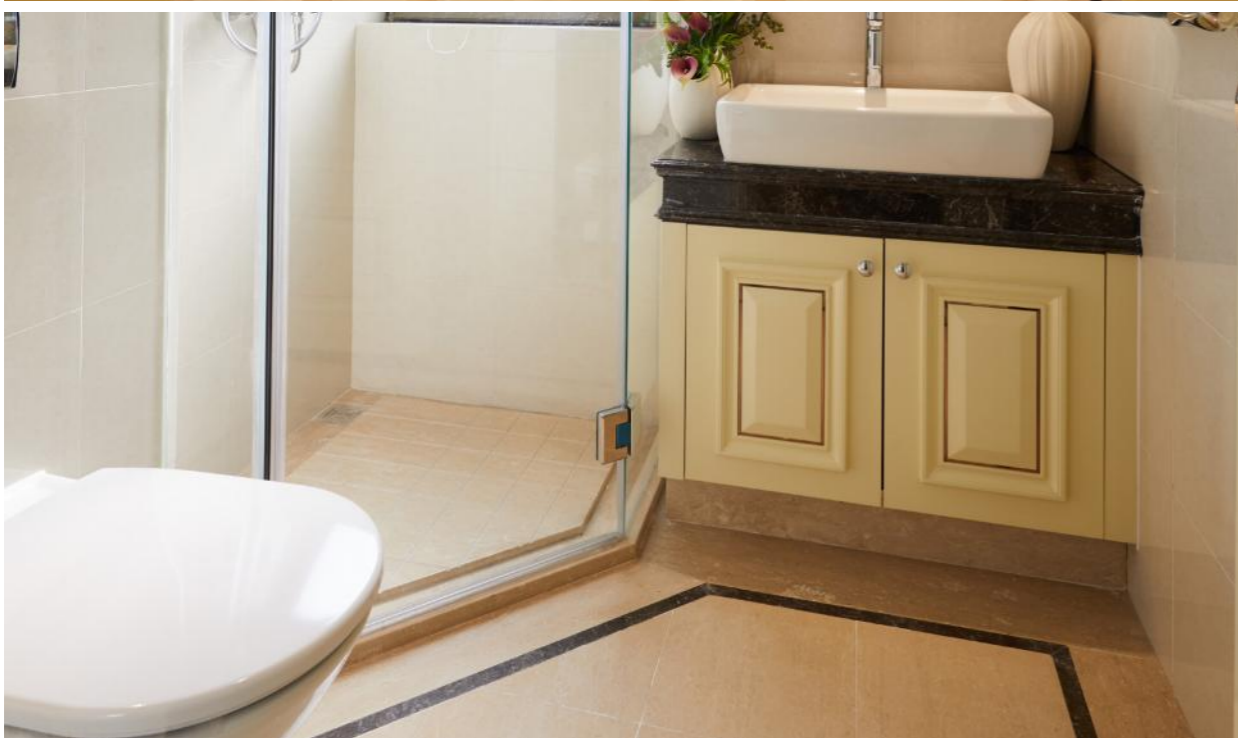


## Beijing Zhongye Dexian Mansion

**Location :** Beijing-China  
**Application :** Floors and Walls

Beijing Zhongye Dexian Mansion is a high-end residential project located in the core area of Beijing, designed to provide a luxurious and comfortable living environment. Developed by China Metallurgical Group Corporation, the project combines modern architectural design with traditional cultural elements, showcasing a unique living style.

The surrounding area is well-equipped with amenities, offering convenient access to commercial centers, educational institutions, and cultural sites. The project features upscale facilities such as a gym, swimming pool, and gardens, aiming to meet the diverse needs of residents. As a representative of premium housing, Zhongye Dexian Mansion attracts many homebuyers seeking a high-quality lifestyle.



# NABEL

# PROJECT CASES



## Chengdu Forte Financial Island

**Location :** Chengdu-China  
**Application :** Floors and Walls

Chengdu Forte Financial Island is a comprehensive project that integrates high-end residential, business office, and leisure entertainment spaces, located in the core financial district of Chengdu. Developed by Forte Group, the project aims to create a modern urban living environment. Financial Island attracts numerous enterprises and high-end clients with its unique architectural design and advantageous geographical location.

The surrounding area is well-equipped with amenities, offering convenient access to multiple metro lines and major roads, while being close to commercial centers and cultural sites. Forte Financial Island not only provides a comfortable living environment but also offers a wealth of business opportunities for residents and enterprises, becoming one of Chengdu's emerging financial and commercial hubs.





## Shanghai Country Garden Xanadu Park

Location : Shanghai-China  
Application : Floors and Walls

Shanghai Country Garden Xanadu Park is a premium residential project developed by Country Garden Group, located in a prime area of Shanghai. The design draws inspiration from natural landscapes, featuring abundant greenery and open spaces to create a harmonious and tranquil community atmosphere. Beautiful Hills is equipped with comprehensive amenities, sports facilities, and leisure areas, providing residents with a convenient and comfortable lifestyle. Emphasizing eco-friendliness and construction quality, the project aims to create an ideal living environment that integrates ecology, comfort, and aesthetics.

NABEL





## Green Town Canal Garden

Green Town Canal Garden is located alongside the picturesque canal, designed with the concept of "living in harmony with nature." The project aims to provide residents with a comfortable and harmonious living environment.

The community is surrounded by lush greenery and beautiful landscapes, equipped with comprehensive amenities and services to create an ideal living space. Canal Garden emphasizes not only the aesthetic appeal of the buildings but also their integration with nature, focusing on ecological sustainability.

**Location :** Hangzhou-China

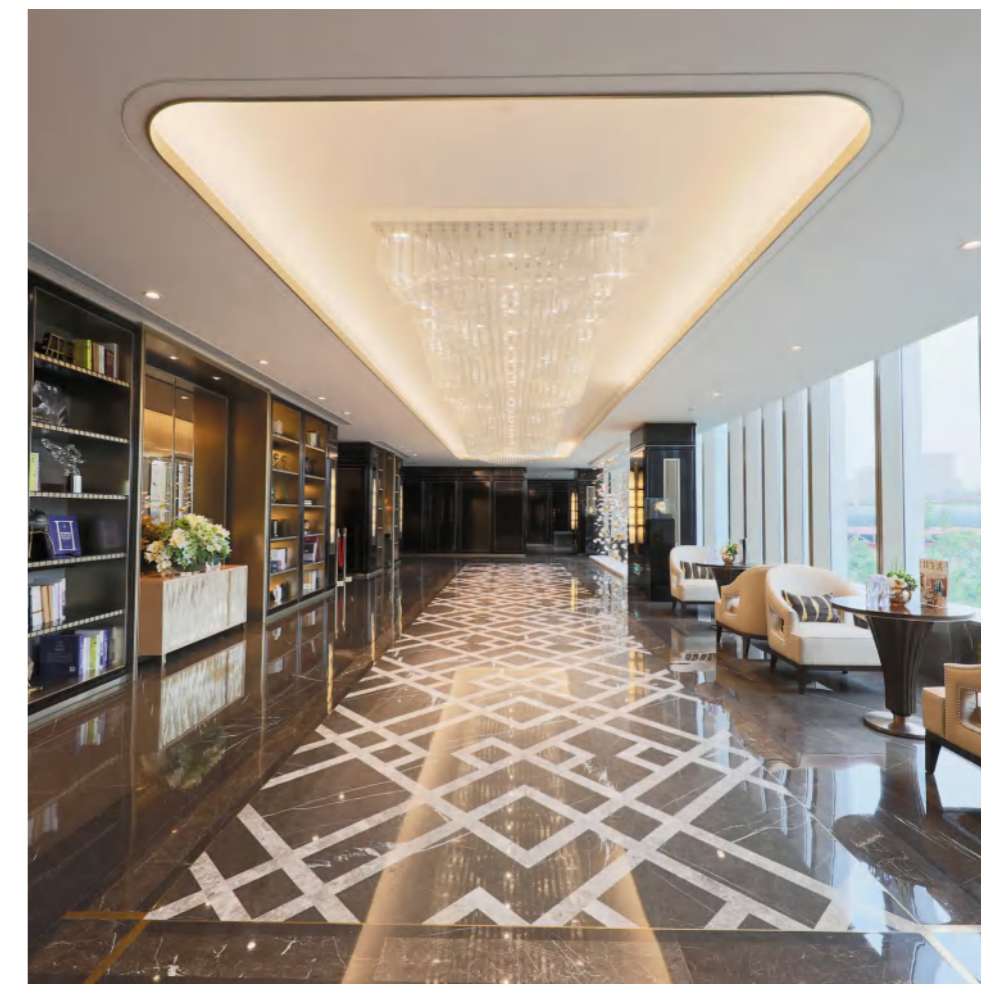
**Application :** Floors and Walls

# PROJECT CASES



Shanghai Jingan Prime Land is a high-end residential project developed by Huafa Group, located in Shanghai's prestigious Jing'an District. Designed to offer a blend of luxury and modernity, the mansion is situated in a bustling area with convenient access to comprehensive amenities, including lifestyle, business, and cultural facilities, and excellent transportation.

Jing'an Mansion features a contemporary architectural style with refined landscaping, focusing on detail and quality to provide residents with an elegant and comfortable living environment. The project reflects Huafa Group's commitment to craftsmanship and international perspective, ensuring top-tier construction quality and service.



## Shanghai Jingan Prime Land

**Location :** Shanghai-China  
**Application :** Floors and Walls



## Wuxi Sunac Camphor Wood Garden

Wuxi Sunac Camphor Wood Garden, developed by Sunac Group, is a premium residential community located near the scenic Lihu Lake in Wuxi, with a focus on "lakeside living and quality residence." The project blends modern architecture with natural landscapes, featuring lush greenery, garden landscapes, and water features within the community to create a serene and beautiful environment. Camphor Garden is equipped with comprehensive amenities, including a fitness center, children's play area, and clubhouse, offering a variety of leisure and lifestyle options for residents. The project emphasizes both aesthetic harmony and construction quality, aiming to set a new standard for high-quality living in Wuxi.

**Location :** Wuxi-China

**Application :** Floors and Walls



# PROJECT CASES



## Sunac Xixi Riverside City

**Location :** Hangzhou-China  
**Application :** Floors and Walls

Sunac Xixi Riverside City, developed by Sunac Group, is located next to Hangzhou's scenic Xixi Wetlands, aiming to create a high-quality, water-oriented residential community integrated with nature. Taking advantage of the natural landscape of the Xixi Wetlands, the project offers a unique eco-friendly living environment. Xixi Riverside City is equipped with comprehensive amenities, including landscaped green spaces, a fitness center, and children's play areas, fostering a comfortable community ambiance. The design harmonizes modern architecture with natural surroundings, providing residents with a tranquil yet convenient premium living space.

# NABEL



## Four Seasons Garden

**Location :** Hongkong-China  
**Application :** Backsplash, Floors and Walls

Hong Kong Four Seasons Garden, developed by Sun Hung Kai Properties, is a premium residential project that combines natural landscapes with modern living. Located in a prime area of Hong Kong, Four Seasons Garden features exquisite landscape designs that showcase the beauty of each season, offering residents a picturesque and dynamic living experience. The community is equipped with a range of facilities, including a swimming pool, gym, children's play area, and clubhouse, catering to the diverse needs of families. Four Seasons Garden focuses not only on exceptional construction quality and detail but also on creating a harmonious and beautiful living environment, providing residents with a peaceful, comfortable, and elegant home.



## Nanjing Kinglee Apartment

Location : Nanjing-China  
 Application : Floors and Walls

Nanjing Kinglee Group is a renowned company dedicated to real estate development and urban operation, with business areas encompassing residential properties, commercial complexes, and urban renewal projects. With a core philosophy of "craftsmanship quality and livable spaces," the company provides high-quality living and working environments through innovative design and high construction standards.

Nanjing Kinglee emphasizes ecology and sustainable development, striving to achieve harmonious integration between residential spaces and urban landscapes, aiming to create a model of high-quality, sustainable urban living.

# PROJECT CASES



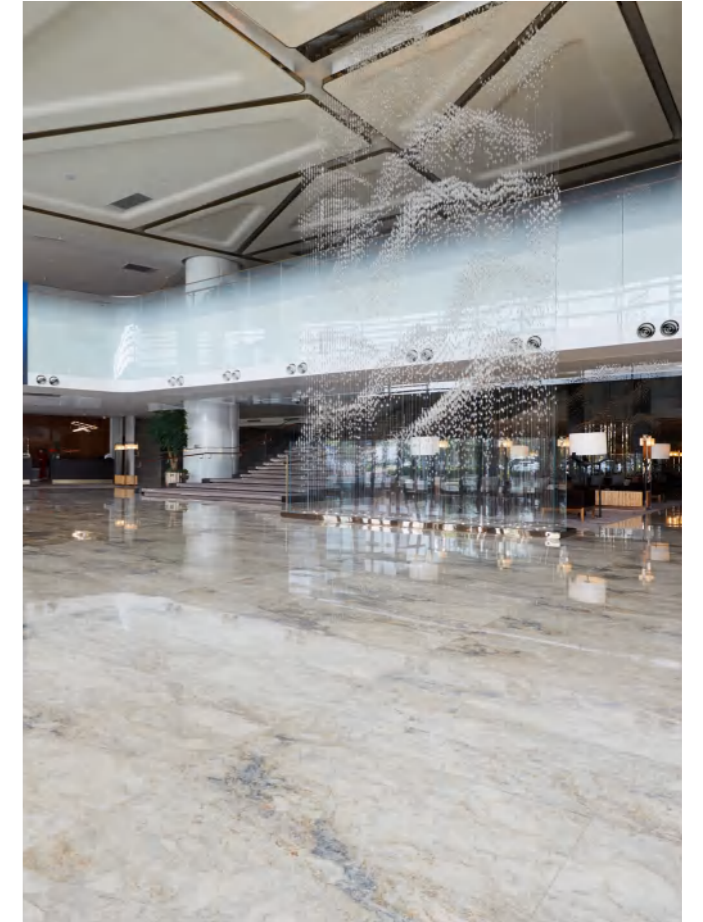
## Shanghai China Railway Construction Champs Elysees International

Location : Shanghai-China  
Application : Floors and Walls



Shanghai China Railway Construction Champs Elysees International is a high-end urban complex developed by China Railway Construction Corporation, located in a prime area of Shanghai. Inspired by the architectural style of the Champs-Élysées in France, the project incorporates modern design elements to create a unique French-inspired ambiance.

Champs Elysees International includes luxury residences, commercial offices, shopping centers, and leisure facilities, aiming to provide residents with a high-quality living and working environment. The project focuses on both aesthetic appeal and eco-friendliness, aspiring to create an international community that combines comfort, convenience, and elegance.



## The Beijing Sunrise Kempinski Hotel

The Beijing Sunrise Kempinski Hotel served as one of the key venues during the 2014 Asia-Pacific Economic Cooperation (APEC) Leaders' Meeting. With its luxurious facilities and exceptional service, the hotel hosted various events and business discussions related to the conference.

**Location :** Tianjing-China  
**Application :** Floors and Walls



# PROJECT CASES



Nanjing Jinling Hotel is a renowned luxury hotel located in Nanjing, China, established in 1983. As one of the landmarks of Nanjing, the Jinling Hotel is known for its elegant design and high-quality service. The hotel offers a variety of guest rooms and suites equipped with modern amenities to cater to both business and leisure travelers. With several restaurants providing both Chinese and Western cuisine, and well-equipped conference and banquet facilities, the hotel is ideal for hosting events of various scales. Its prime location and outstanding service make Jinling Hotel a top choice for visitors and business professionals in Nanjing.



## Nanjing Jinling Hotel

**Location :** Nanjing-China  
**Application :** Floors and Walls



## Nanjing Yunshuijian Boutique Hotel

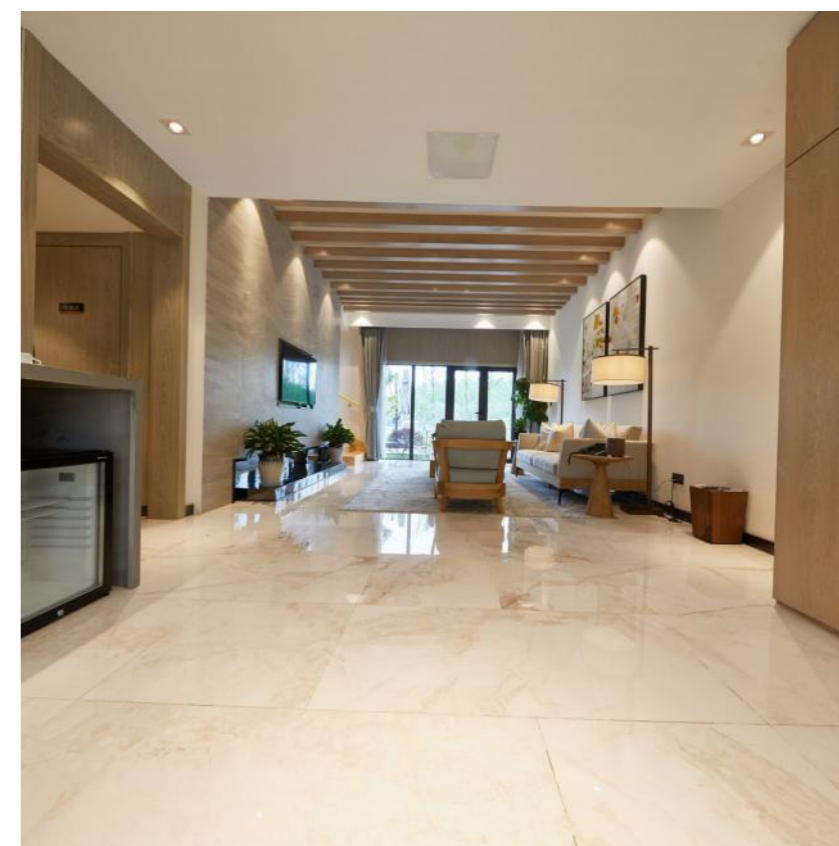
Nanjing Yunshuijian Boutique Hotel is a modern boutique hotel located in the heart of Nanjing, surrounded by a serene environment. The hotel design combines traditional and contemporary elements, offering a comfortable stay. The rooms are well-equipped to meet the needs of both business and leisure travelers.

The hotel features a restaurant, café, and meeting rooms, making it suitable for various events and gatherings. With its excellent service and unique ambiance, Yunshuijian Hotel attracts numerous visitors and business professionals.

**Location :** Nanjing-China

**Application :** Floors and Walls

## PROJECT CASES



# PROJECT CASES



## Suzhou Hengli Hotel

Suzhou Hengli Hotel is a modern upscale hotel located in the heart of Suzhou, making it convenient for visitors to access major attractions and business districts. The hotel design incorporates traditional cultural elements of Suzhou, providing an elegant and comfortable accommodation environment. The rooms are well-equipped with modern amenities to ensure convenience and comfort for guests. The hotel features various dining options, a fitness center, and meeting rooms, catering to diverse guest needs. With its excellent service and unique location, Hengli Hotel is an ideal choice for both business travel and leisure vacations.

**Location :** Wuxi-China

**Application :** Countertop, Furniture, Floors and Walls





## Yancheng Marriott Hotel

Yancheng Marriott Hotel is a luxurious international brand hotel located in the heart of Yancheng, Jiangsu Province. The hotel features modern design and offers a comfortable accommodation environment, equipped with amenities to meet the needs of both business and leisure travelers. It has various dining options, including Chinese and Western cuisines, catering to diverse tastes. Additionally, the hotel offers facilities such as a fitness center, swimming pool, and meeting rooms, providing convenience and comfort for guests.

With its excellent service and prime location, Yancheng Marriott Hotel is an ideal choice for visitors and business professionals alike.

**Location :** Yancheng-China

**Application :** Floors and Walls



# PROJECT CASES

# SHOPPING MALL & OFFICE BUILDING



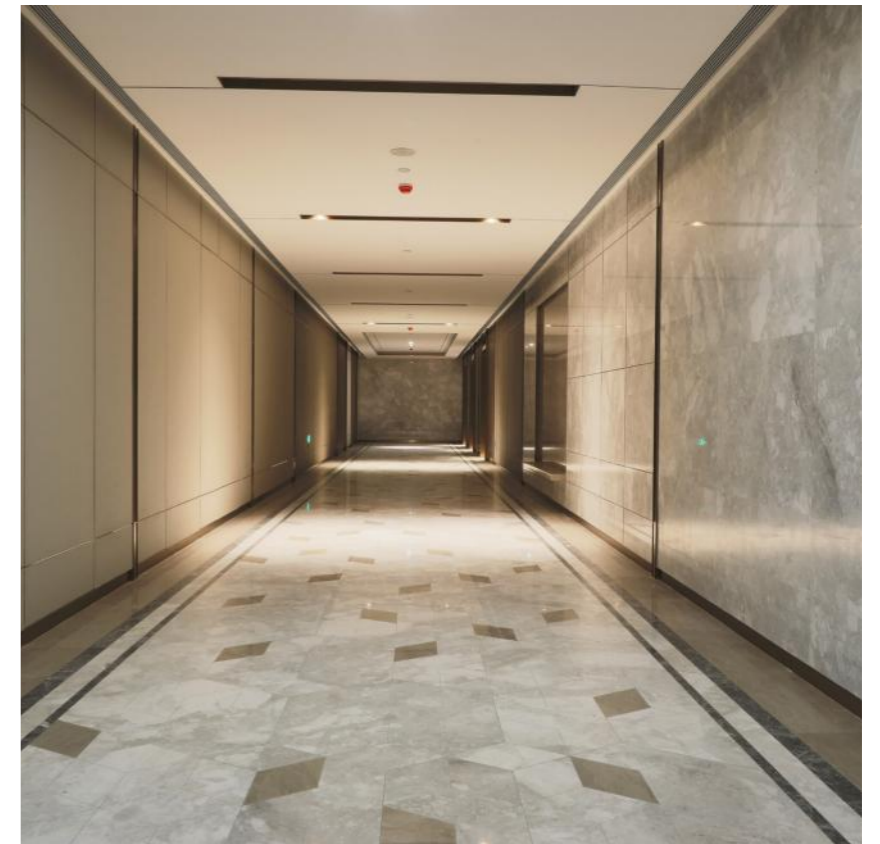
## Suzhou Industrial Park IFS

Location : Suzhou-China  
Application : Floors and Walls

Suzhou Industrial Park IFS (International Finance Square) is a high-end commercial complex located in the Suzhou Industrial Park. This project combines shopping, dining, entertainment, and office functions, aiming to provide consumers with a one-stop high-quality lifestyle experience.

IFS features numerous internationally renowned brands across luxury goods, fashion, home decor, and more, along with a diverse range of dining options and leisure venues. Additionally, the center's modern and stylish architectural design has made it one of the important landmarks in Suzhou.

NABEL





## House of Fraser

House of Fraser is a renowned department store in the UK, known for offering high-end fashion, home goods, and beauty products. With multiple locations across the UK, the store features a wide range of international brands to cater to diverse consumer needs.

House of Fraser is celebrated for its exceptional customer service and elegant shopping environment, dedicated to providing a pleasant shopping experience.

**Location :** London-UK

**Application :** Floors and Walls

# PROJECT CASES



Shanghai Sunbow Financial Center is located in Shanghai, China, and is a modern comprehensive financial office building. The center integrates office spaces, meeting facilities, and commercial areas, aiming to provide an efficient working environment and high-quality services for financial institutions and companies.

The architectural design combines modern aesthetics with green and sustainable concepts, featuring advanced internal facilities, multifunctional meeting rooms, business centers, and leisure areas, creating a conducive atmosphere for resident enterprises. As an important part of Shanghai's financial sector, the Sunbow Financial Center attracts numerous domestic and international financial institutions and companies, becoming a key venue for financial activities and business exchanges.

## Shanghai Sunbow Financial Center

Location : Shanghai-China  
Application : Floors and Walls



# PROJECT CASES



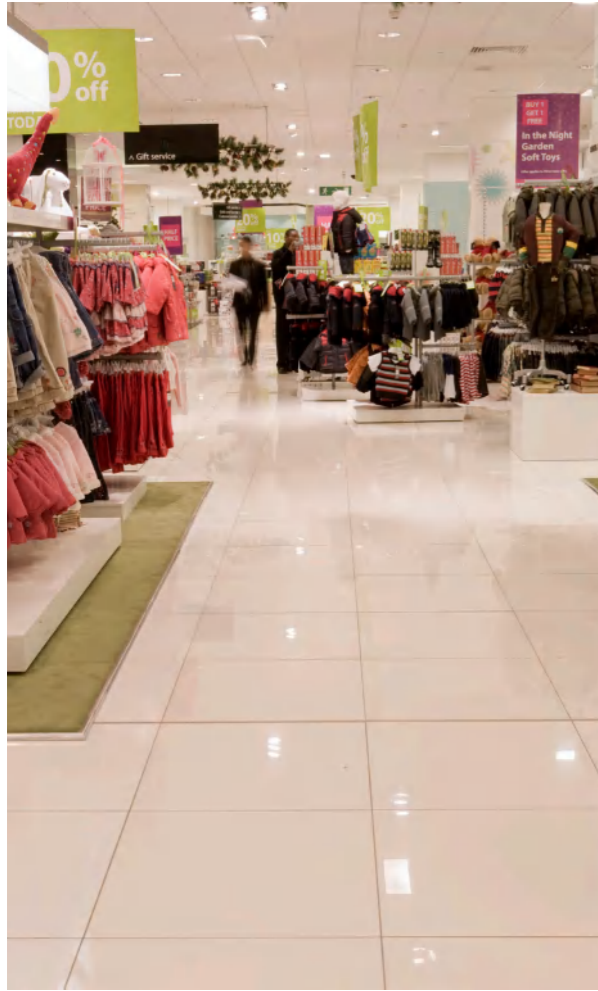
## The Tianjin Binhai New Area CBD

Location : Tianjin-China  
Application : Floors and Walls

The Tianjin Binhai New Area CBD (Central Business District) is an important economic and commercial center in Tianjin, located in the heart of the Binhai New Area. This area is known for its modern urban planning and high-end business environment, attracting numerous domestic and international companies and financial institutions.

The Binhai New Area CBD integrates office spaces, commercial facilities, cultural venues, and leisure areas, featuring multiple high-rise buildings and complexes that provide a wide range of commercial amenities and services. It is not only a key engine for Tianjin's economic development but also an important platform for regional cooperation and international exchange.

# PROJECT CASES



## Debenhams

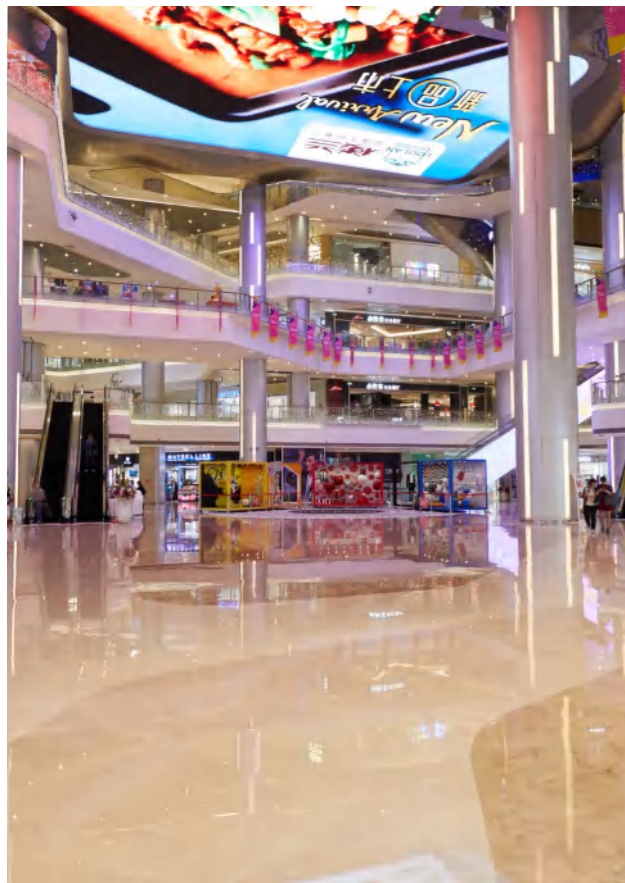
Location : London-UK

Application : Floors and Walls

Debenhams is a renowned British department store, with a branch located in London's Westfield Shopping Mall, offering a wide selection of products, including fashion, home goods, beauty products, and accessories.

Known for its modern and spacious shopping environment and high-quality service, the Debenhams Westfield store is dedicated to providing customers with an enjoyable shopping experience. The store showcases the latest fashion trends and offers a variety of choices for family shoppers, making it an ideal destination for both shopping and leisure.

# NABEL



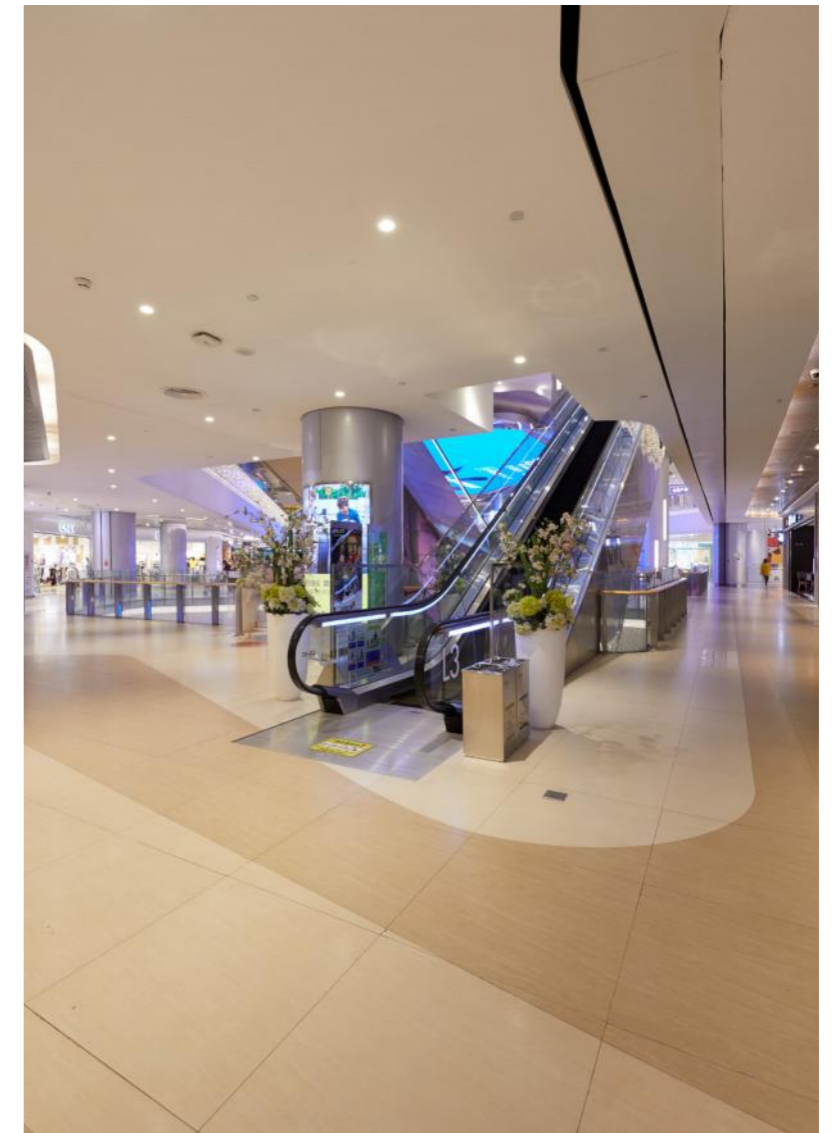
CapitaLand Tianfu Center, developed by CapitaLand Group, is a large-scale mixed-use project located in the heart of Chengdu's Tianfu New District. Based on the concept of "dynamic city, quality living," Tianfu Center integrates shopping malls, Grade-A office spaces, serviced apartments, and green public areas to create a multifunctional and international urban lifestyle hub.

The project combines modern architectural design with ecological elements, providing residents and business professionals with a comfortable, convenient, and vibrant environment for both work and leisure. CapitaLand Tianfu Center not only sets a new trend for urban development but also aims to become a landmark in Chengdu, enhancing the quality of life in the area.

**Location :** Chengdu-China

**Application :** Floors and Walls

## CapitaLand Tianfu Center





## Indonesia Huayou Cobalt Industry Park

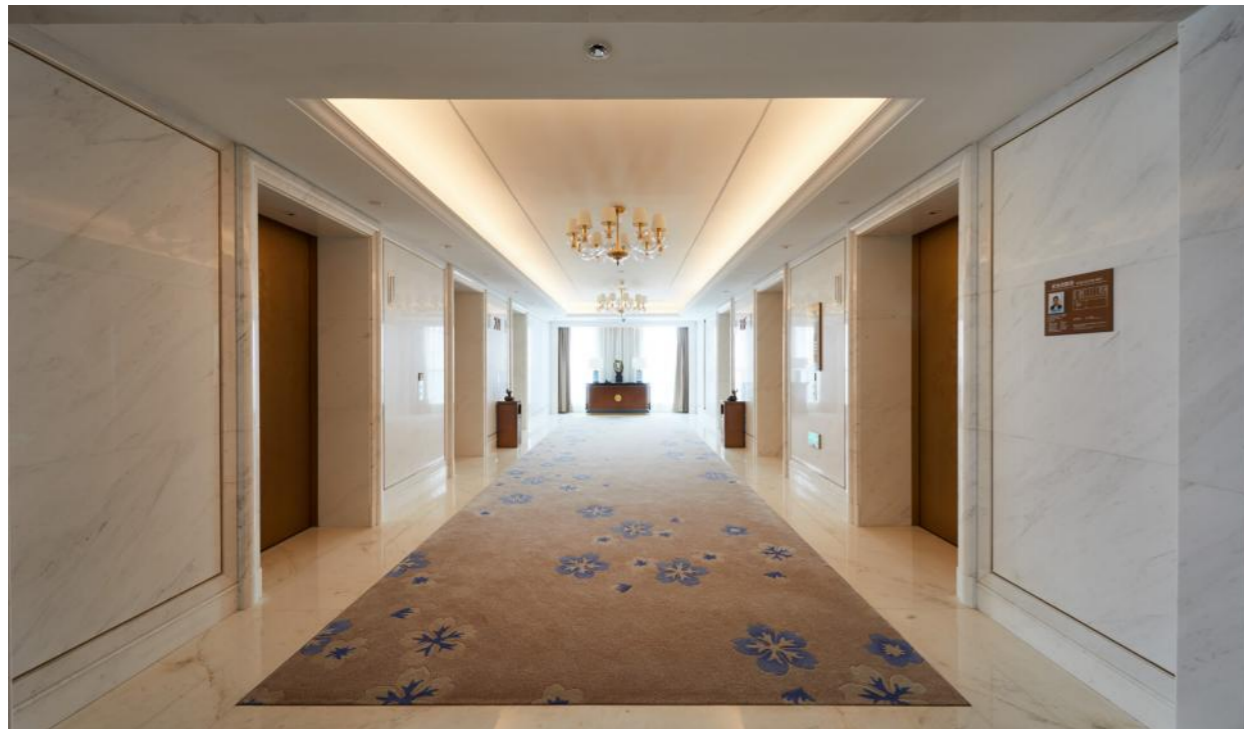
The Indonesia Huayou Cobalt Industry Park is a large industrial park invested and constructed by Huayou Cobalt Co., Ltd., located in Indonesia. The park focuses on the mining, processing, and application of cobalt, aiming to meet the growing global demand in the battery and new energy markets. Equipped with advanced production facilities and technologies, the industry park is committed to providing high-quality cobalt products while emphasizing environmental protection and sustainable development. Huayou Cobalt Industry Park also actively promotes local economic development, creates job opportunities, and collaborates closely with local communities to foster social responsibility and sustainable business practices.

**Location :** Maluku-Indonesia

**Application :** Floors and Walls

# PROJECT CASES





## Zhejiang International Film and Television Base

Zhejiang International Film and Television Base is located in Zhejiang Province, China, and serves as a professional center for film and television production and creation. The base is dedicated to providing comprehensive shooting services and support for movies, TV dramas, variety shows, and more, featuring modern studios, post-production facilities, and abundant outdoor shooting resources.

It gathers numerous film and television production companies, creative teams, and talents, making it an important part of China's film and television industry. The Zhejiang International Film and Television Base also actively promotes cultural exchange and collaboration in the film and television sector, regularly hosting related events and exhibitions, providing a solid platform for industry development.

**Location :** Hangzhou-China  
**Application :** Floors and Walls



# NABEL



## Chengdu Xinhua Star

**Location :** Chengdu-China  
**Application :** Floors and Walls

Chengdu Xinhua Star is a modern, comprehensive commercial project located in the heart of Chengdu. This project aims to provide high-quality office, shopping, and leisure experiences for both businesses and consumers, making it an important landmark in the region.

## Shanghai Robot Industrial Park

**Location :** Shanghai-China  
**Application :** Facades, Floors and Walls

Shanghai Robot Industrial Park is located in Shanghai, China, and focuses on robotics and intelligent manufacturing technology. The park is dedicated to promoting the research, development, production, and application of robotics technology, bringing together various robotics companies, research institutions, and innovation teams. It is equipped with advanced laboratories, production facilities, and exhibition centers, providing a conducive environment for resident companies. Additionally, Shanghai Zhongao Robot Industrial Park actively fosters technical exchanges and collaborations, promoting the widespread application of automation and intelligent manufacturing, and supporting the upgrading and development of related industries.





## Fusen Creative Building

Fusen Creative Building is a modern office building located in the commercial center of a city in China. The building aims to provide a space that integrates work, communication, and innovation for the creative industry and startups, becoming an important base for promoting urban economic and cultural development.

**Location :** Chengdu-China  
**Application :** Floors and Walls



## Suzhou GCL Plaza · Haoting

Suzhou GCL Plaza · Haoting is located in Suzhou, China, and is a modern complex that integrates office, commercial, and leisure functions. With its unique architectural design and advantageous geographical location, it has become an important business and social hub in Suzhou.

Haoting offers high-quality office spaces equipped with advanced facilities and services, aiming to meet the needs of various enterprises. Additionally, the plaza features a diverse range of commercial amenities, including dining, shopping, and entertainment options, providing a convenient living experience for employees and visitors. Suzhou GCL Plaza · Haoting is not only an ideal venue for business activities but also an essential part of urban life.

**Location :** Suzhou-China

**Application :** Floors and Walls

# PROJECT CASES





## Beijing Greenland Central Plaza

Beijing Greenland Central Plaza is a comprehensive commercial project located in Beijing, China, encompassing office, retail, and leisure functions. The plaza features modern design with a focus on green building principles and sustainability, aiming to provide open public spaces that create convenience for nearby residents and office workers. The plaza includes a variety of shops, dining areas, and multi-functional event spaces, attracting numerous well-known brands and businesses, making it an important commercial and social hub.

**Location :** Beijing-China

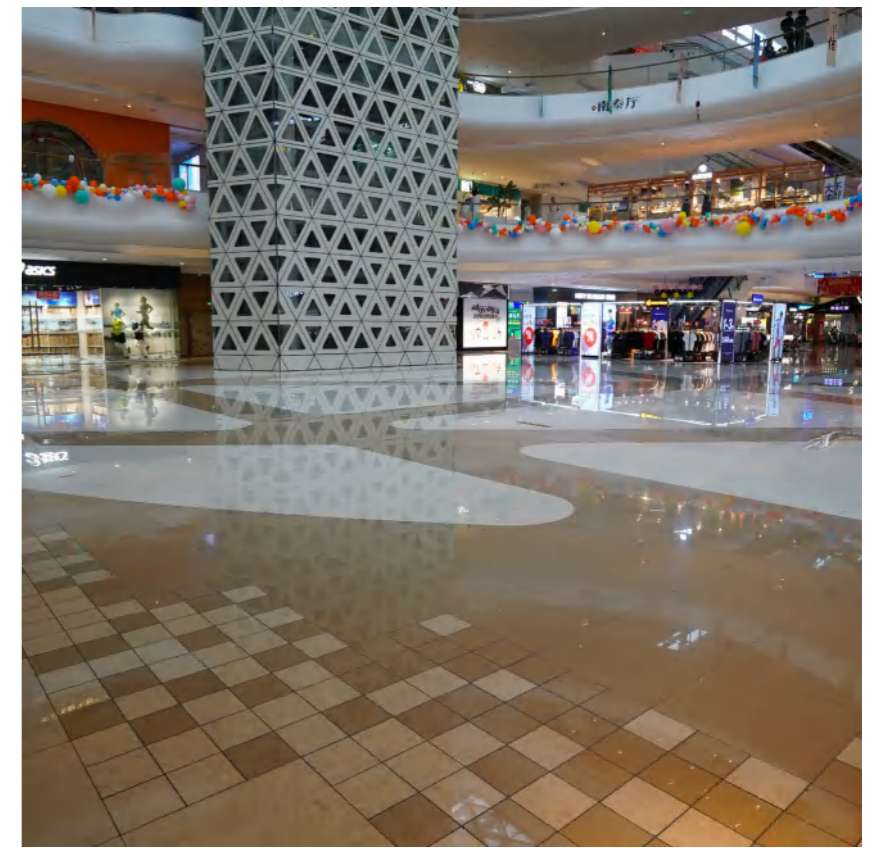
**Application :** Floors and Walls

# PROJECT CASES





# PROJECT CASES



## Hangzhou Intime City

Hangzhou Intime City, developed by Intime Group, is a large-scale commercial complex located in the heart of Hangzhou, combining shopping, dining, entertainment, office spaces, and lifestyle services into one modern urban center.

With a stylish and contemporary interior, Intime City offers a wide range of branded stores, diverse dining options, cinemas, and children's play areas to cater to consumers of all ages. As a major commercial landmark in Hangzhou, Intime City not only provides a dynamic shopping experience but also hosts various social events and brand showcases, creating a vibrant social hub popular among both residents and tourists for shopping and leisure.

**Location :** Hangzhou-China  
**Application :** Floors and Walls

## China Life Headquarter

The China Life Headquarter is located in Beijing, China, and serves as the iconic headquarters for China Life Insurance (Group) Company. As one of the largest insurance companies in China, this building reflects the company's strong presence and industry status, while also exemplifying modern architectural design.

**Location :** Beijing-China

**Application :** Floors and Walls



# NABEL



## The headquarters building of China Postal Savings Bank

**Location :** Beijing-China

**Application :** Floors and Walls

The headquarters building of China Postal Savings Bank is located in Beijing and serves as the main office for the bank. The building features a modern design with a unique appearance, reflecting the professionalism and innovative spirit of the financial industry. Inside the headquarters, there are advanced office facilities and meeting spaces, providing a comfortable working environment for employees.

As the core operational center of China Postal Savings Bank, it plays a crucial role in management and decision-making, driving the bank's business development and innovation.



## Nanjing Golden Eagle Shopping Mall

Location : Nanjing-China  
Application : Floors and Walls

Nanjing Golden Eagle Shopping Mall is a large-scale comprehensive shopping center located in a bustling commercial district of Nanjing, dedicated to providing a diverse shopping experience for customers. The mall features a wide array of well-known domestic and international brands, covering categories such as fashion apparel, cosmetics, home goods, dining, and entertainment, catering to various consumer needs.

Golden Eagle Shopping Mall is known for its modern design and elegant environment, offering a comfortable shopping atmosphere. The mall regularly hosts promotional events and themed activities to attract shoppers, making it a popular destination for both Nanjing residents and tourists.



## The Nanjing Software Park Fuying Building

The Nanjing Software Park Fuying Building is a high-tech office building located within the Nanjing Software Park, focusing on providing innovative office spaces and support services for technology companies and startup teams. The building features modern office facilities, meeting rooms, and shared spaces designed to promote collaboration and communication among businesses. Fuying Building also offers incubation services to assist startups in their growth and development. As an important hub for technological innovation in Nanjing, Fuying Building attracts numerous high-tech enterprises and entrepreneurs.

**Location :** Nanjing-China  
**Application :** Floors and Walls



# PROJECT CASES

# PROJECT CASES

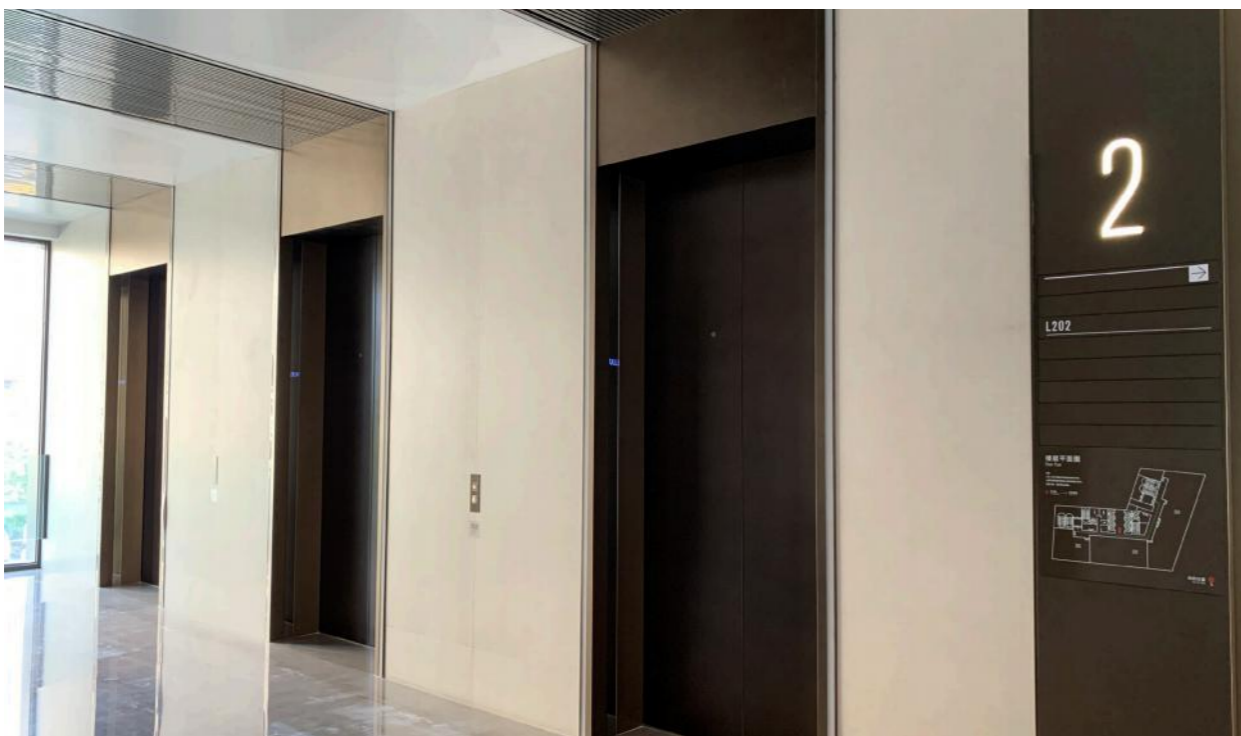


## Nanjing Tengfei Masion

Location : Nanjing-China  
Application : Floors and Walls

Nanjing Tengfei Masion is a modern comprehensive office building located in the city center of Nanjing. The building features a unique and contemporary design, offering a high-standard office environment and supporting facilities. Inside, Tengfei Building includes multifunctional meeting rooms, a business center, and leisure areas, making it suitable for various enterprises.

As an important part of Nanjing's commercial development, Tengfei Building attracts numerous domestic and international companies, becoming a significant venue for business activities and exchanges.



## Shanghai Sunbow Financial Center

**Location :** Shanghai-China  
**Application :** Floors and Walls

Shanghai Sunbow Financial Center is located in Shanghai, China, and is a modern comprehensive financial office building. The center integrates office spaces, meeting facilities, and commercial areas, aiming to provide an efficient working environment and high-quality services for financial institutions and companies. The architectural design combines modern aesthetics with green and sustainable concepts, featuring advanced internal facilities, multifunctional meeting rooms, business centers, and leisure areas, creating a conducive atmosphere for resident enterprises. As an important part of Shanghai's financial sector, the Sunbow Financial Center attracts numerous domestic and international financial institutions and companies, becoming a key venue for financial activities and business exchanges.



# NABEL

# RETAIL



NIO Inc. is a pioneer and leader in the global smart electric vehicle market. Founded in November 2014, NIO is dedicated to co-creating a sustainable and better future, embodying the mission of "Blue Sky Coming." The company designs, develops, manufactures, and sells smart electric vehicles while driving innovation in next-generation core technologies.



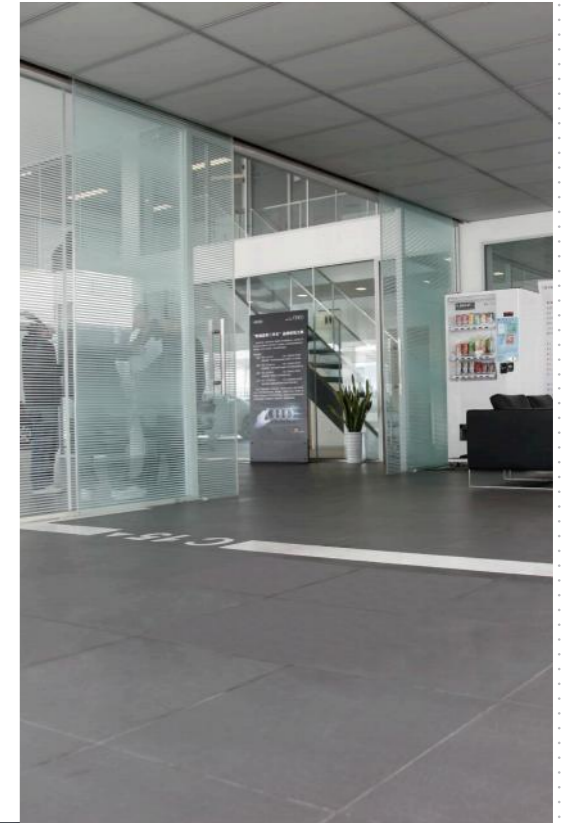
# NABEL

NIO Car Showroom

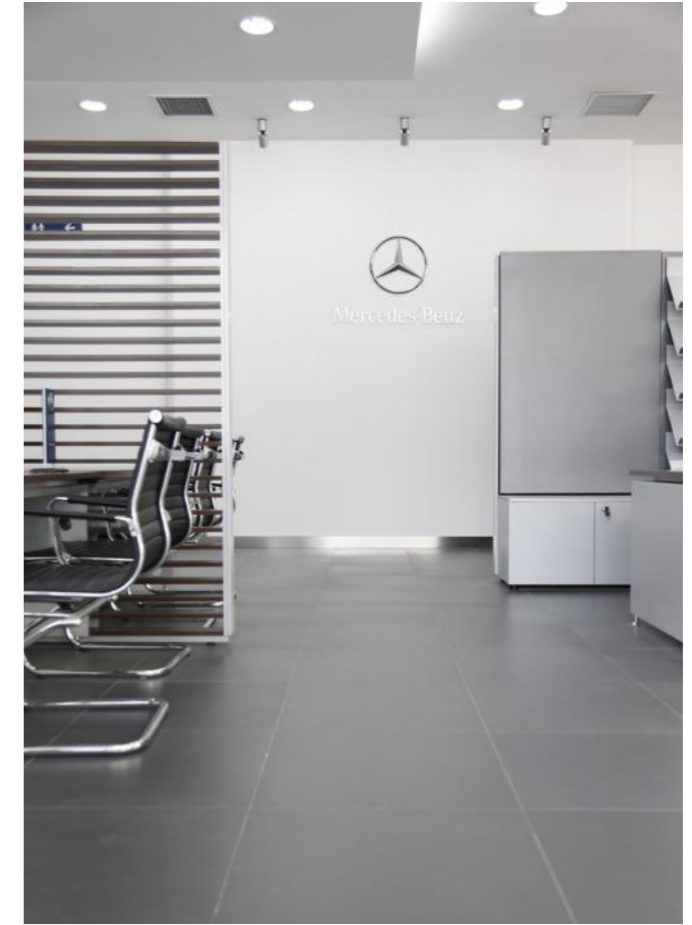


## Audi 4S Showroom

Audi, one of Germany's most longstanding and prestigious car manufacturers, has become an icon among luxury automotive brands. Renowned for its high standards of technology, quality, and powerful performance, Audi upholds the core values of Progressiveness, Sophistication, and Dynamism.



INABEL



## Mercedes-Benz 4S Showroom

Mercedes-Benz is a world-renowned luxury automobile brand. In January 1886, Carl Benz invented the first three-wheeled automobile, earning him the title of "the inventor of the automobile." Meanwhile, Gottlieb Daimler, another founder of the brand, created the world's first four-wheeled automobile, marking a significant change in the world. In June 1926, Daimler and Benz companies merged to form Daimler-Benz, and the vehicles named Mercedes-Benz became synonymous with high-quality and high-performance automotive products.

# PROJECT CASES



**BMW 4S Showroom**

BMW is a premium German automotive brand founded in 1916, with headquarters in Munich, Bavaria, Germany. The blue and white colors of the BMW logo reflect the colors of Bavaria's state flag, where the company originated. Over the past century, BMW has grown from an aircraft engine manufacturer into a leading global group that specializes in luxury sedans and also produces renowned aircraft engines, SUVs, and motorcycles.



## Cadillac 4S Showroom

Cadillac, a renowned luxury automotive brand under General Motors, was founded in 1902 in Detroit, known as the Motor City of America. Over its more than a century-long history, Cadillac has achieved numerous industry firsts and set many luxury car standards. The brand's legacy is often seen as a representation of the history of American luxury automobiles.

## Volkswagen 4S Showroom

Volkswagen is an automotive manufacturing company headquartered in Wolfsburg, Germany. It is the core enterprise of the Volkswagen Group, one of the world's four largest automotive manufacturers.



# PROJECT CASES

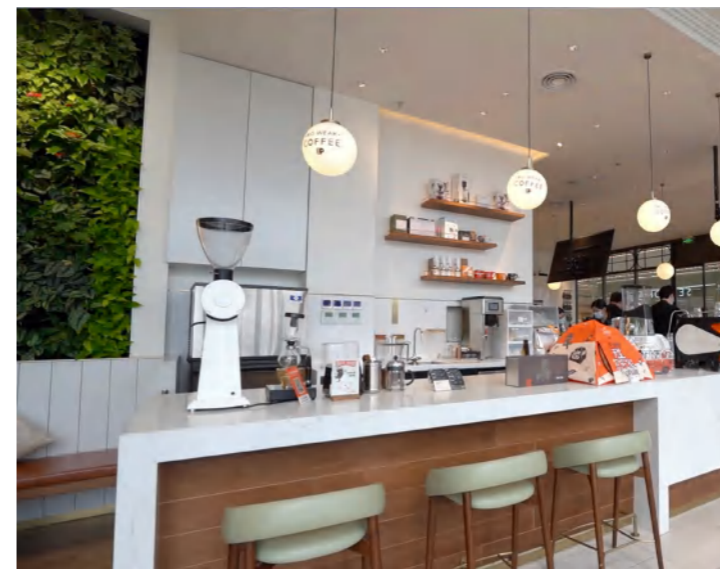


Volvo is a renowned Swedish luxury automobile brand that was founded in 1927 and is headquartered in Gothenburg. Known for its safety, durability, and innovative technology, Volvo is dedicated to providing consumers with a high-quality driving experience. The brand's signature design features a clean exterior and comfortable interiors, with a strong emphasis on environmental sustainability.

**Volvo 4S Showroom**



# PROJECT CASES



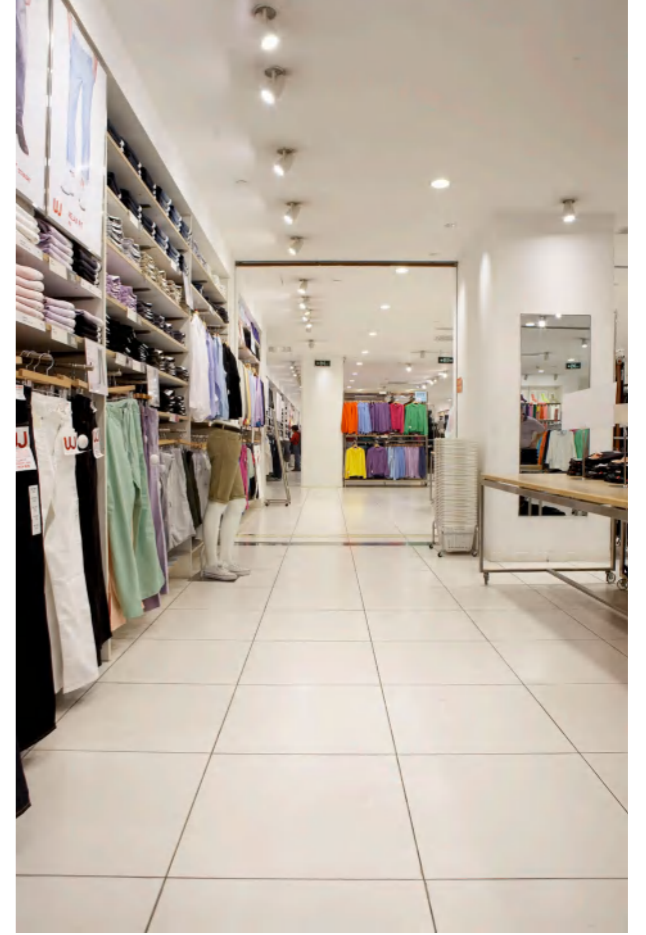
## Peet's Coffee

Master Peet's Coffee, currently under the JDE Peet's of JAB Holdings, was founded by Alfred Peet in 1966 in Berkeley, California, USA, and entered China in 2017, with a history of nearly 60 years. It is a coffee chain brand service provider, and because of its contribution to the field of boutique coffee, it is known as the 'grandmaster' of the coffee industry in the industry.



## UNIQLO

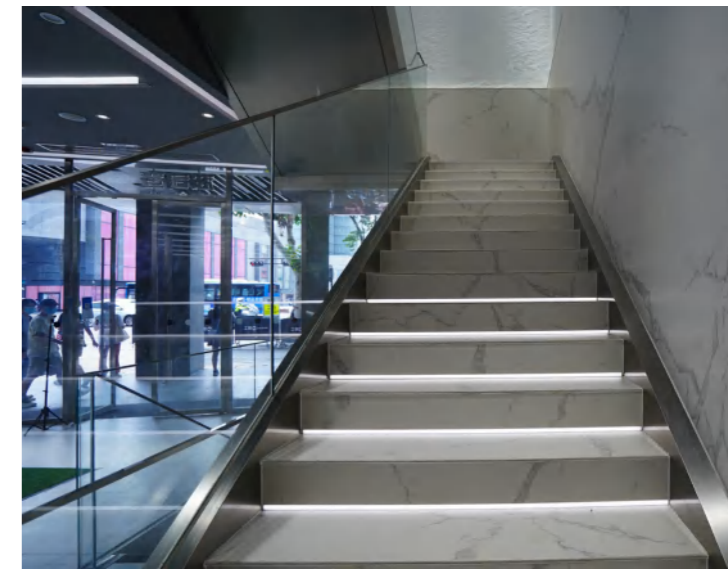
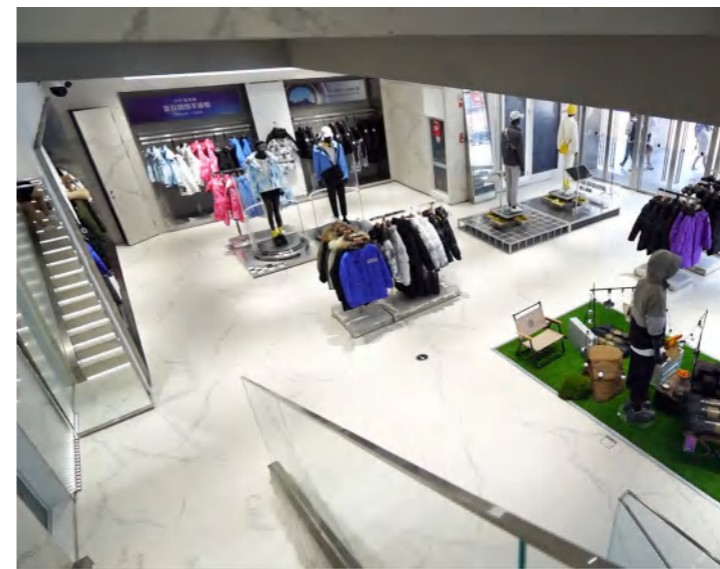
UNIQLO is the core brand of Fast Retailing Co., Ltd., established in 1984. Initially a small clothing store selling suits, UNIQLO has grown into a well-known global brand recognized for its affordable and stylish apparel.



# PROJECT CASES



# PROJECT CASES



## Bosideng

Bosideng is a large-scale down apparel manufacturer with advanced production facilities in China. Headquartered in Suzhou, Jiangsu Province, Bosideng is mainly engaged in the development and management of its own down apparel brands, including product research, design, development, raw material sourcing, outsourced production, marketing and sales. Bosideng down apparel sells well in 72 countries, including the United States, France and Italy.

# PROJECT CASES



## ALDI

ALDI, founded in 1913, is a German supermarket. In 2017, ALDI officially entered the Chinese market, with "ALDI" established as the official Chinese name for the brand.



FOLLOW US ON:



**NABEL**

[en.nabel.cc](http://en.nabel.cc)